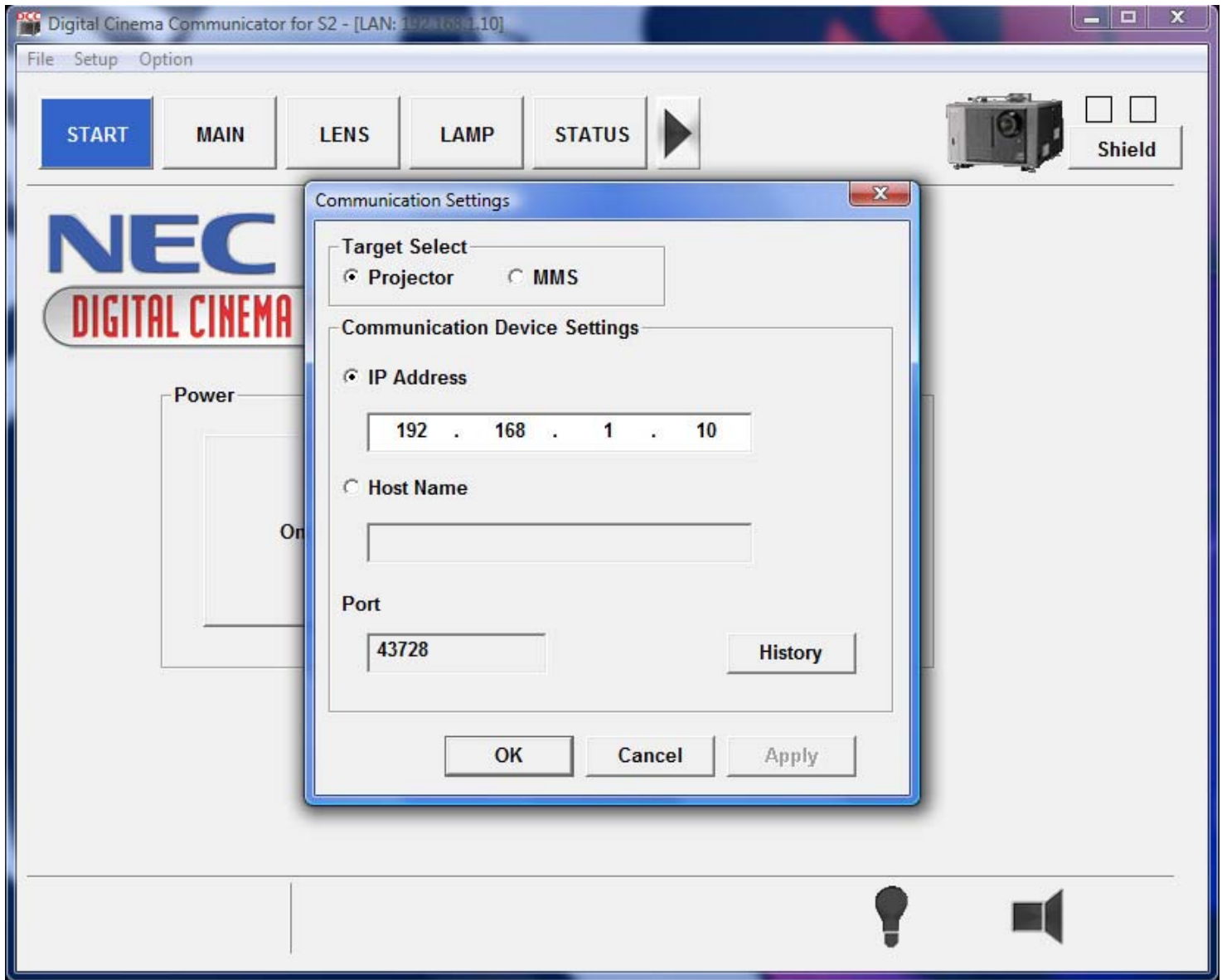


How to Install a new ICP Board for NEC

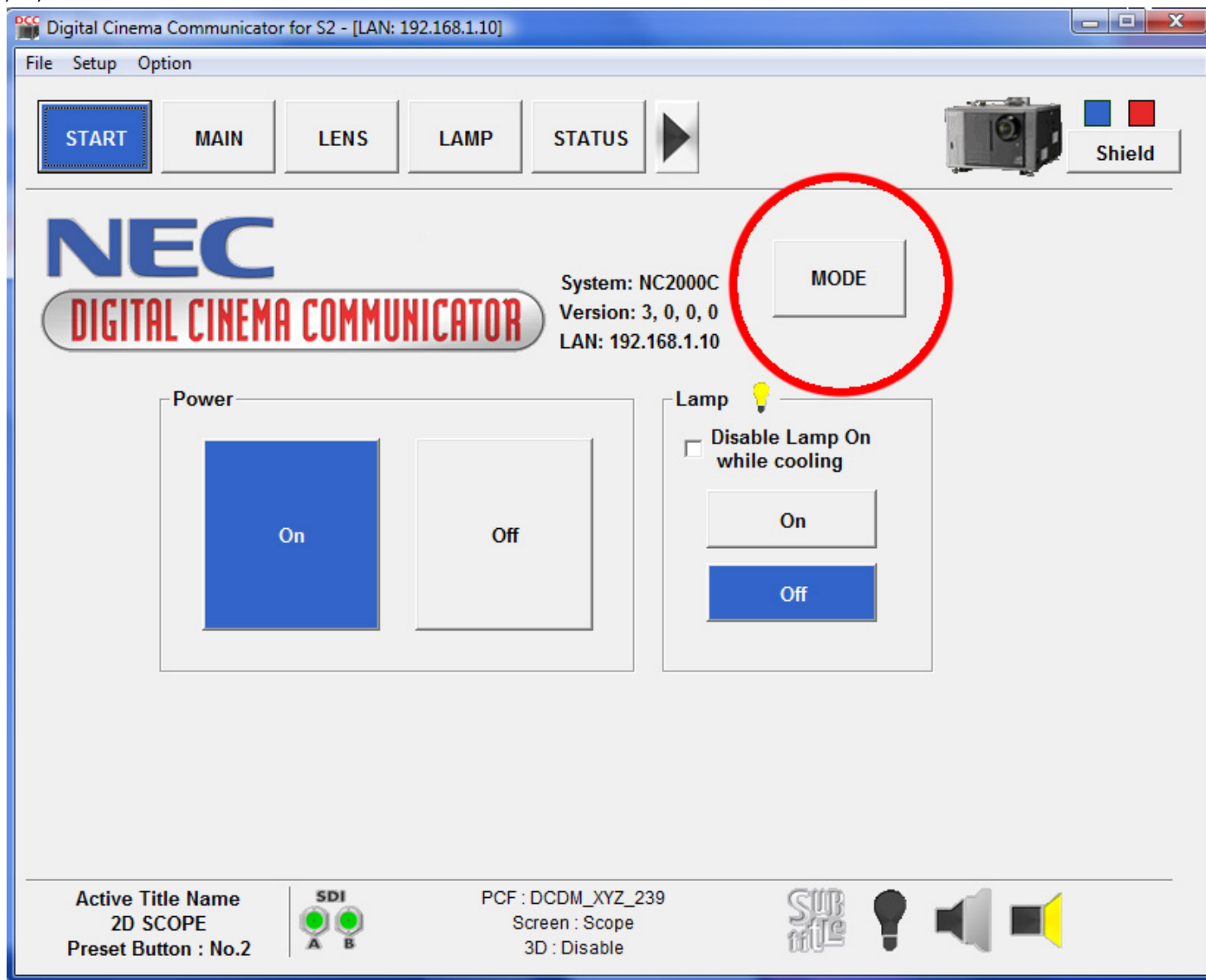
The ICP Board and You.

To begin you will need to connect to your projector with your NEC Communicator in order to back up your current configuration files if you are able to. If you already have the files backed up then you can skip down to the installation of the board its self.

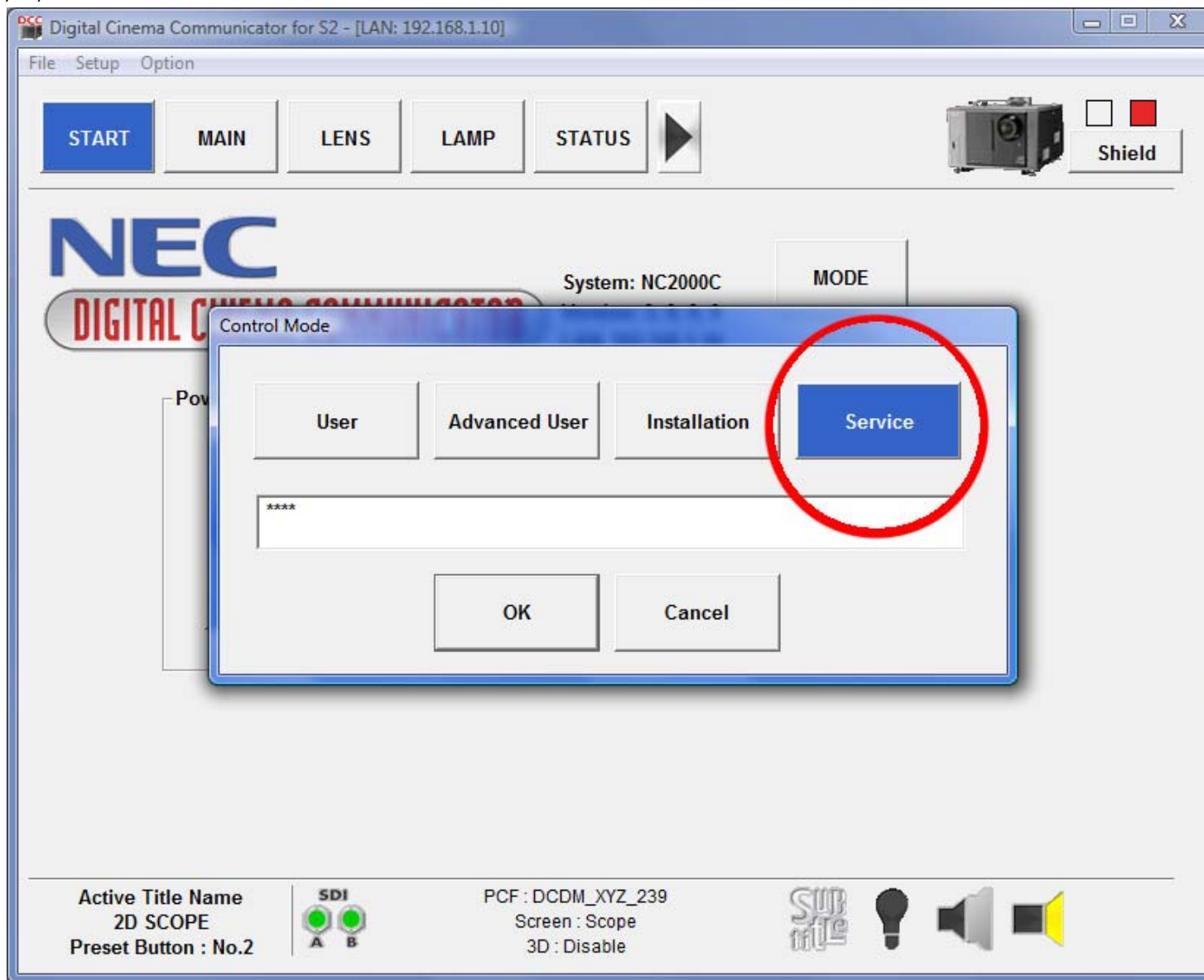
1. Connect to the projector via the Communicator. Once you have entered your projectors IP address click OK. (NOTE: That the IP address of your projector may differ from the one used below.)



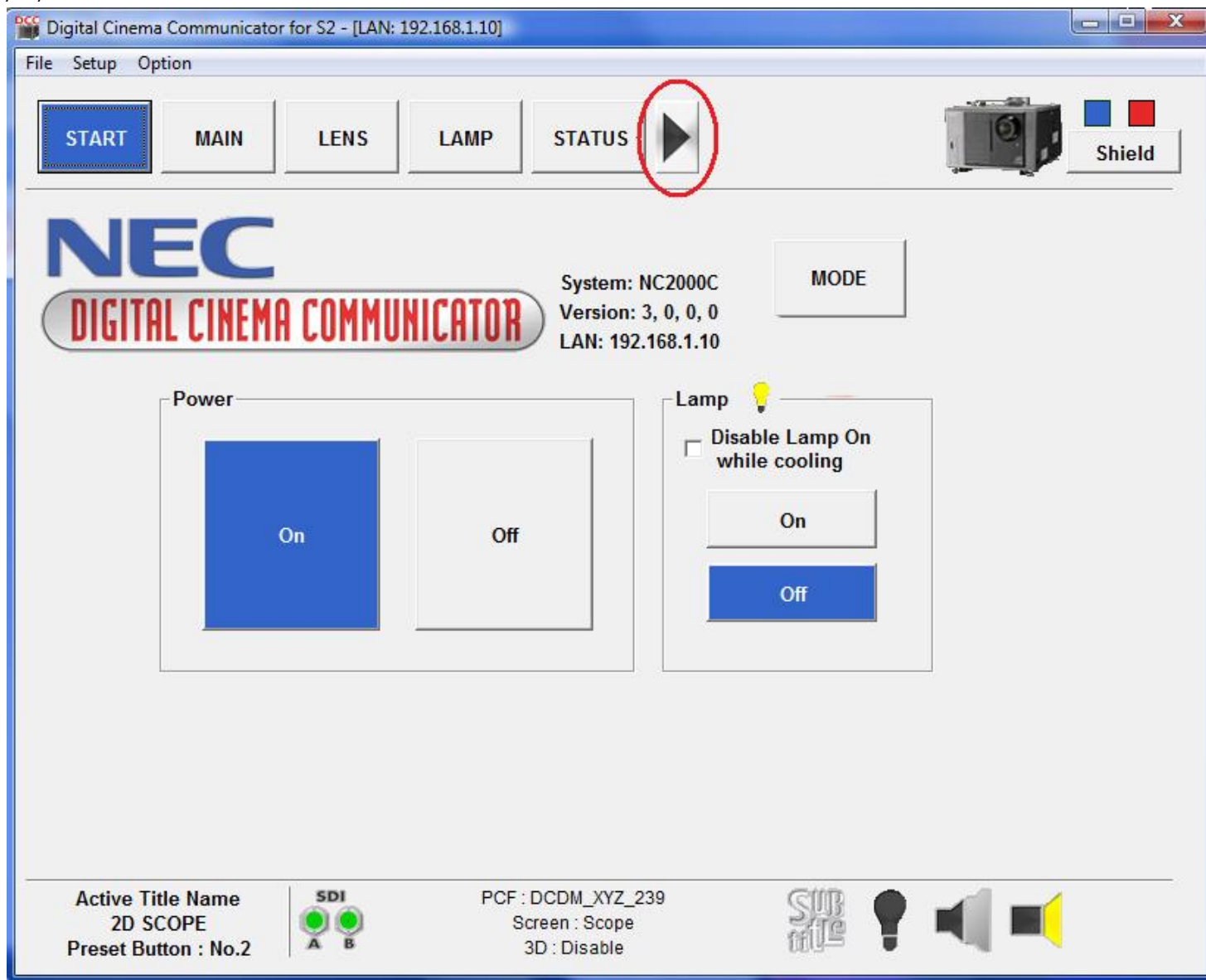
2. Once logged on select **Mode**.



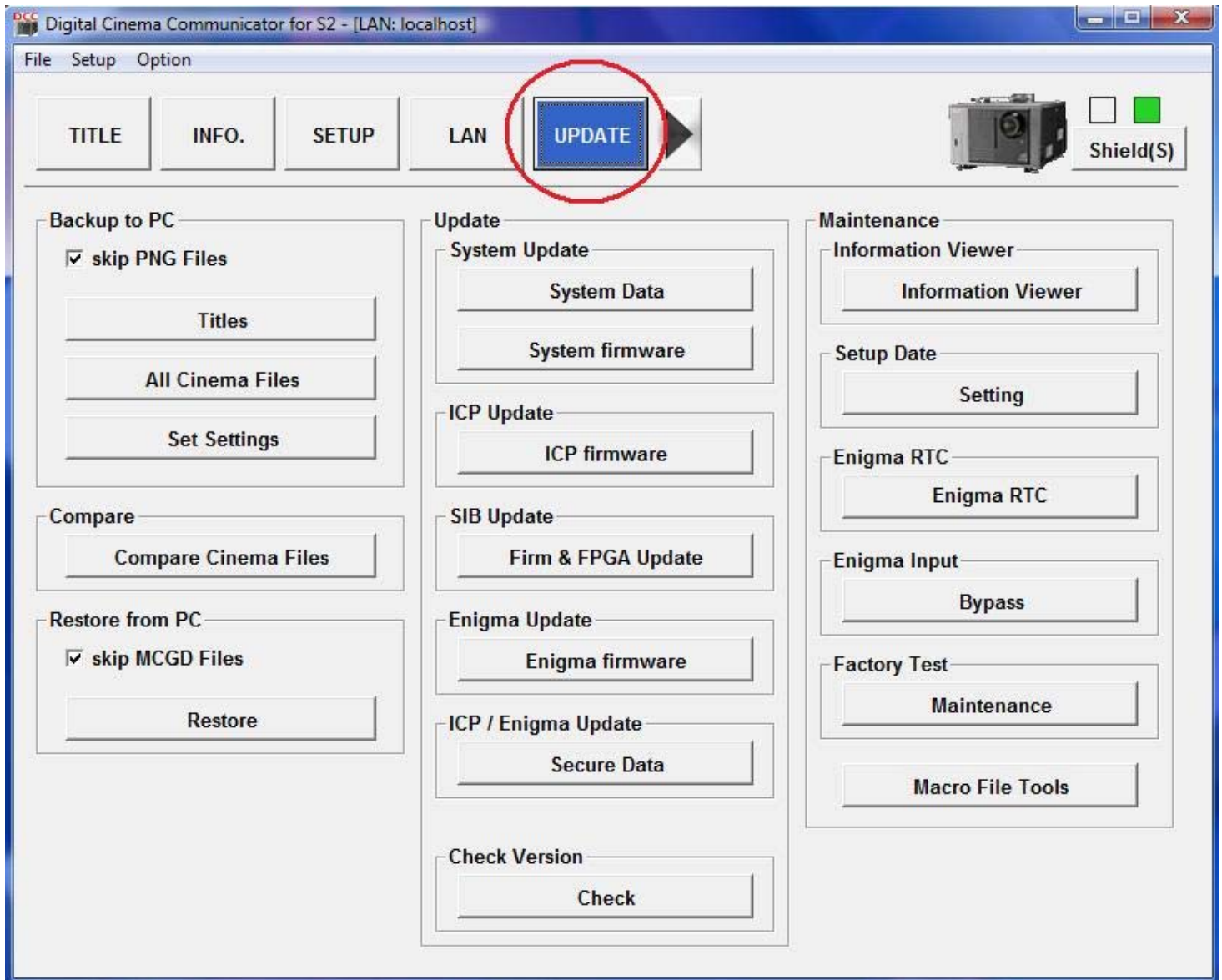
3. Click on the **SERVICE** button, and blow enter the code **3151** and click **OK**



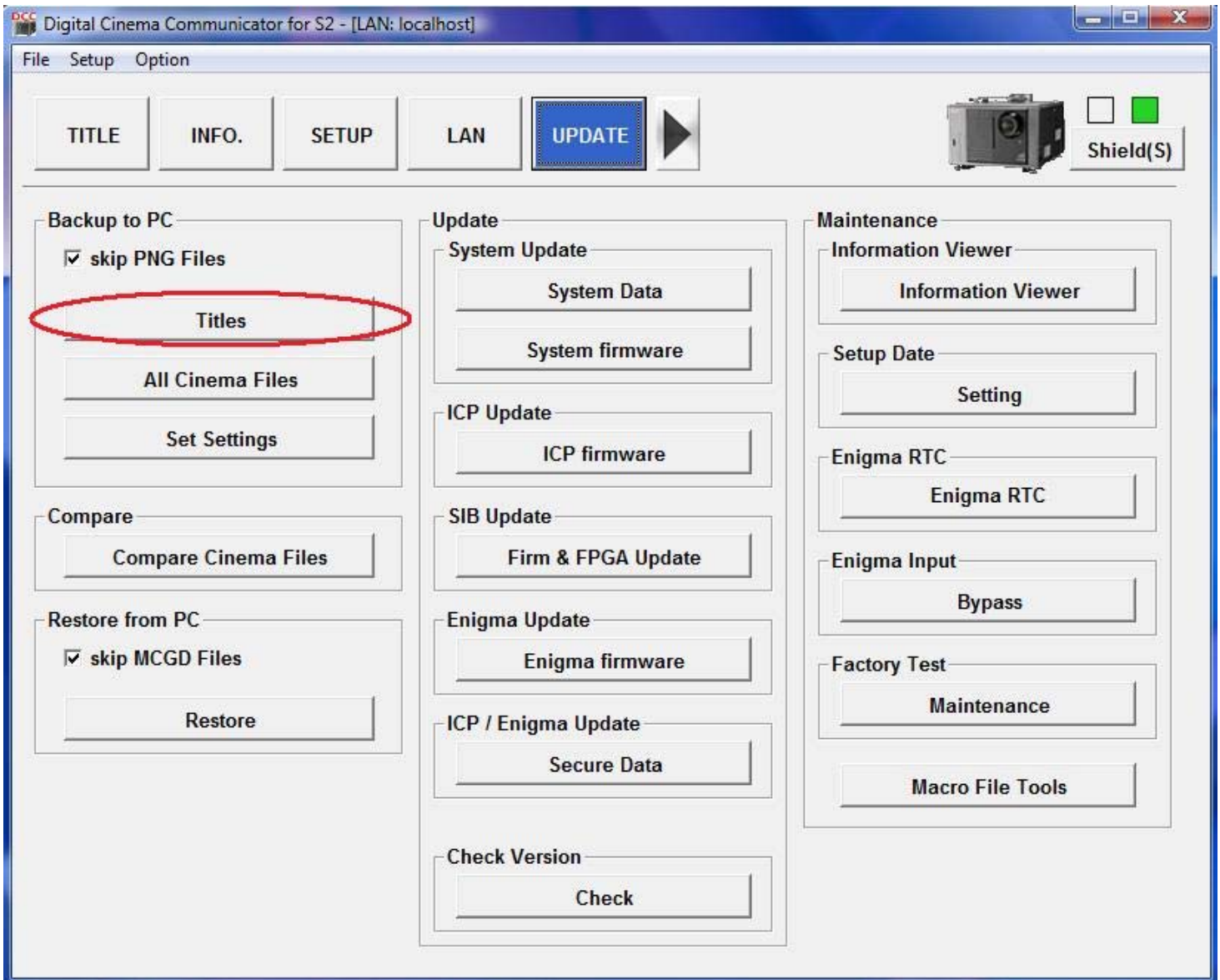
4. Click the **Next Arrow**



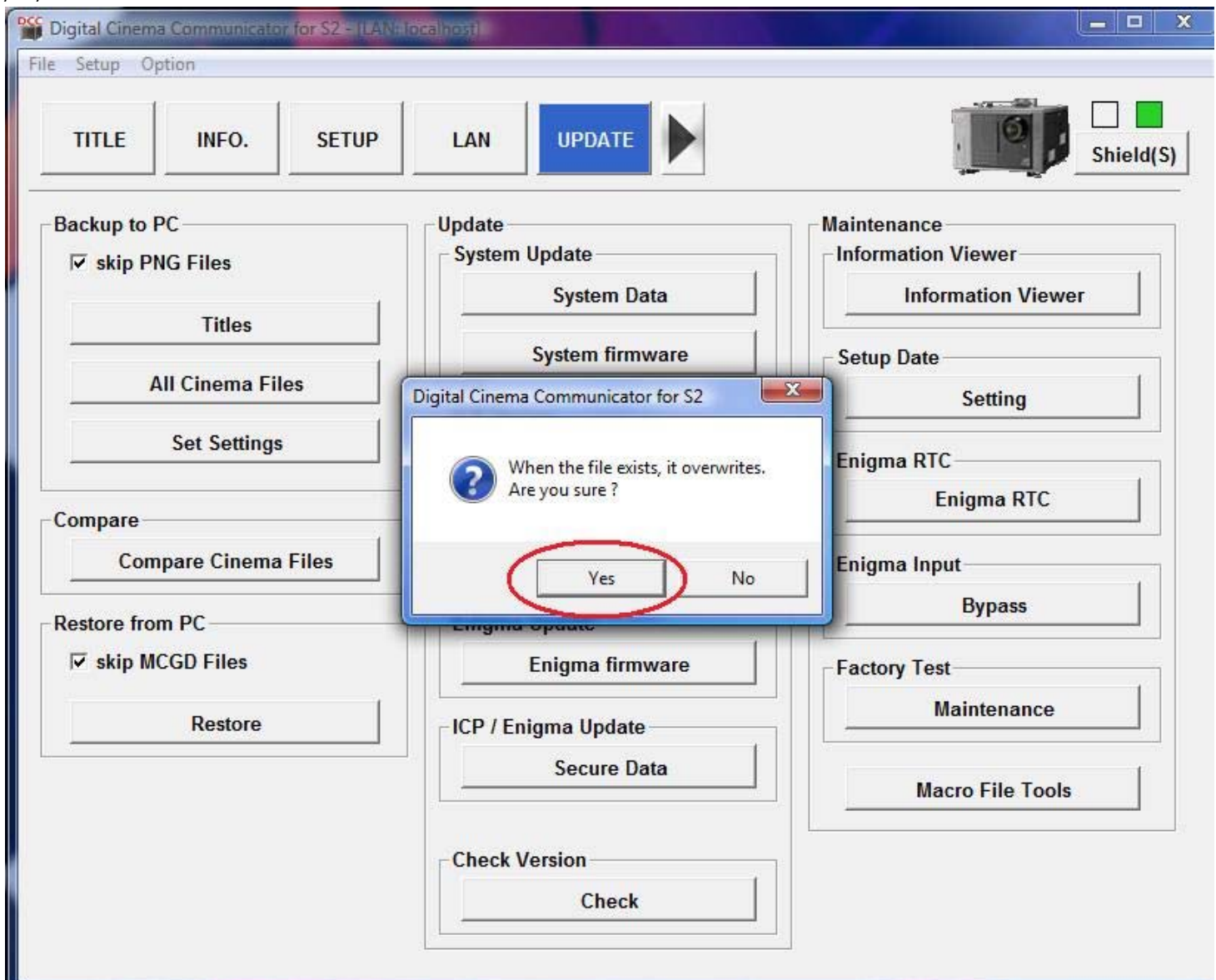
5. Click **UPDATE** button.



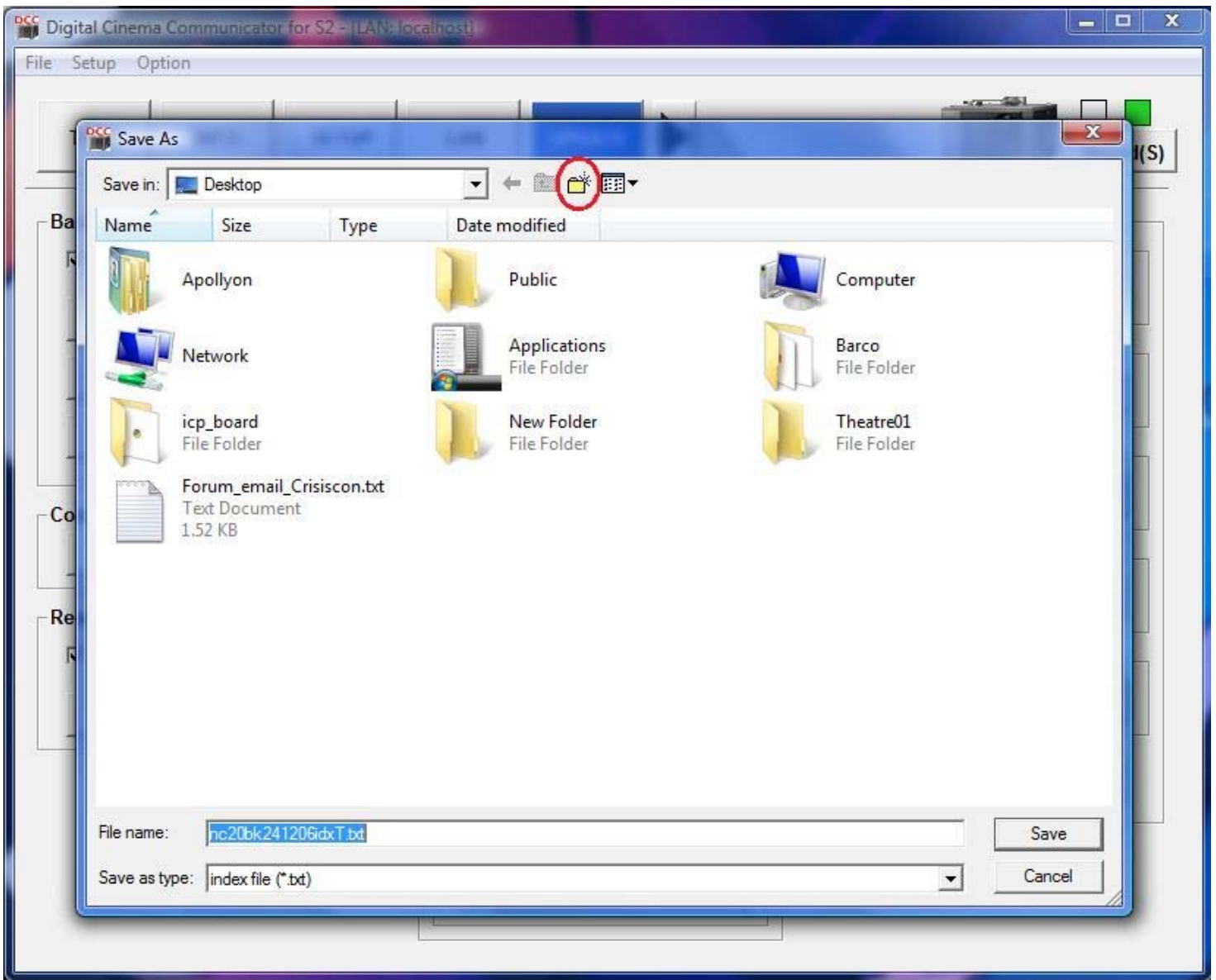
6. Click the **TITLES** Button



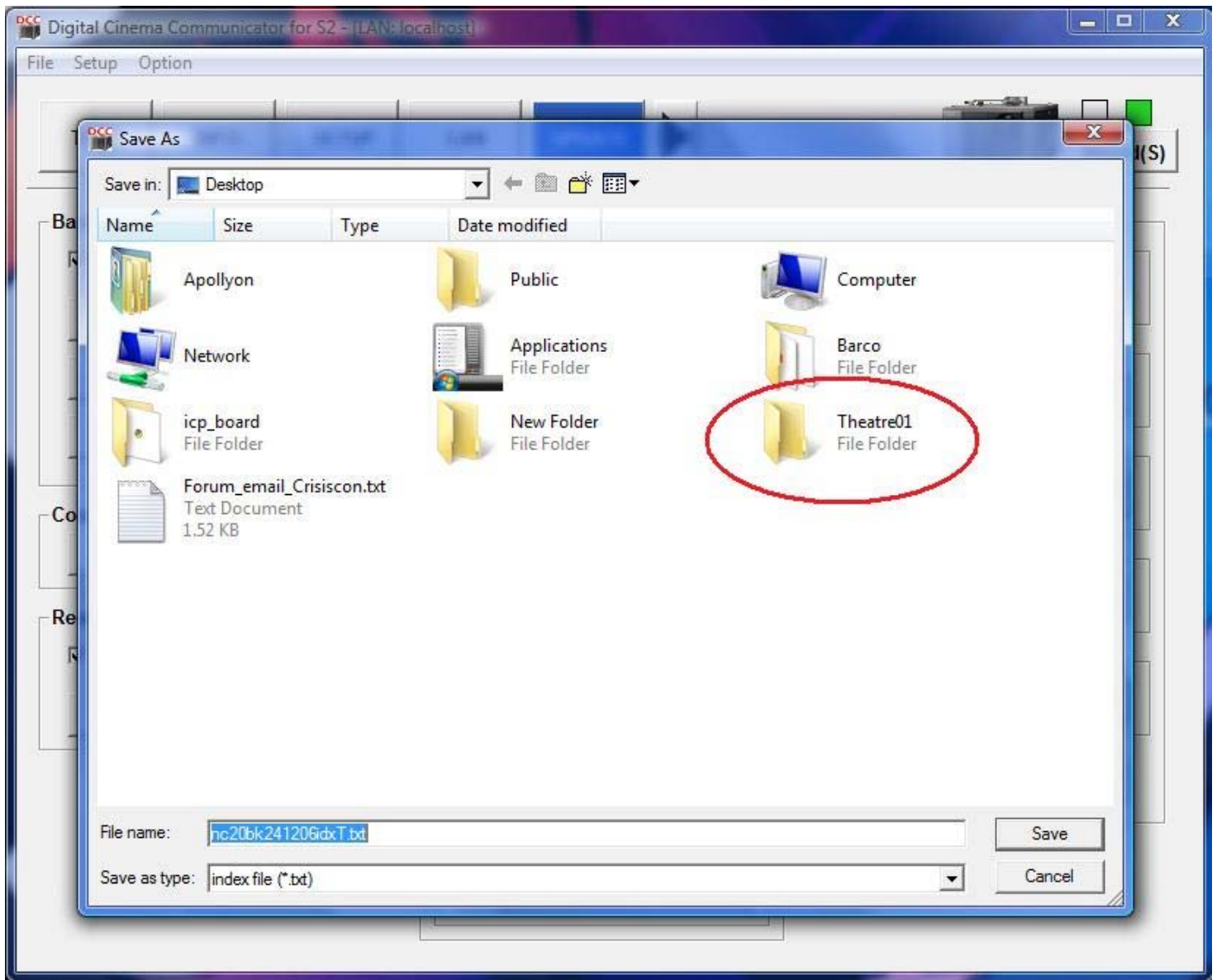
7. When the new window opens click **YES**.



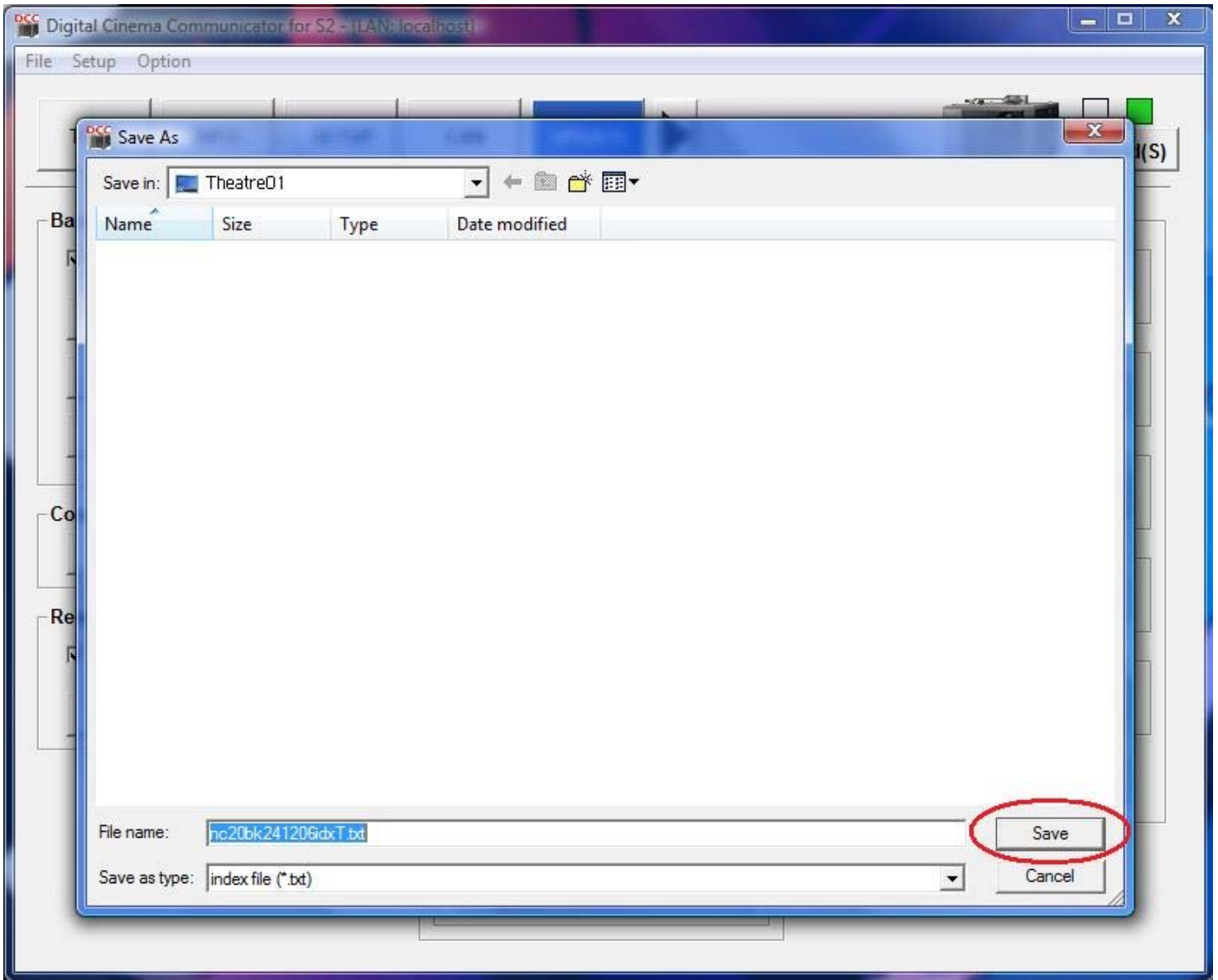
8. When the Save As window opens click **New Folder** button.



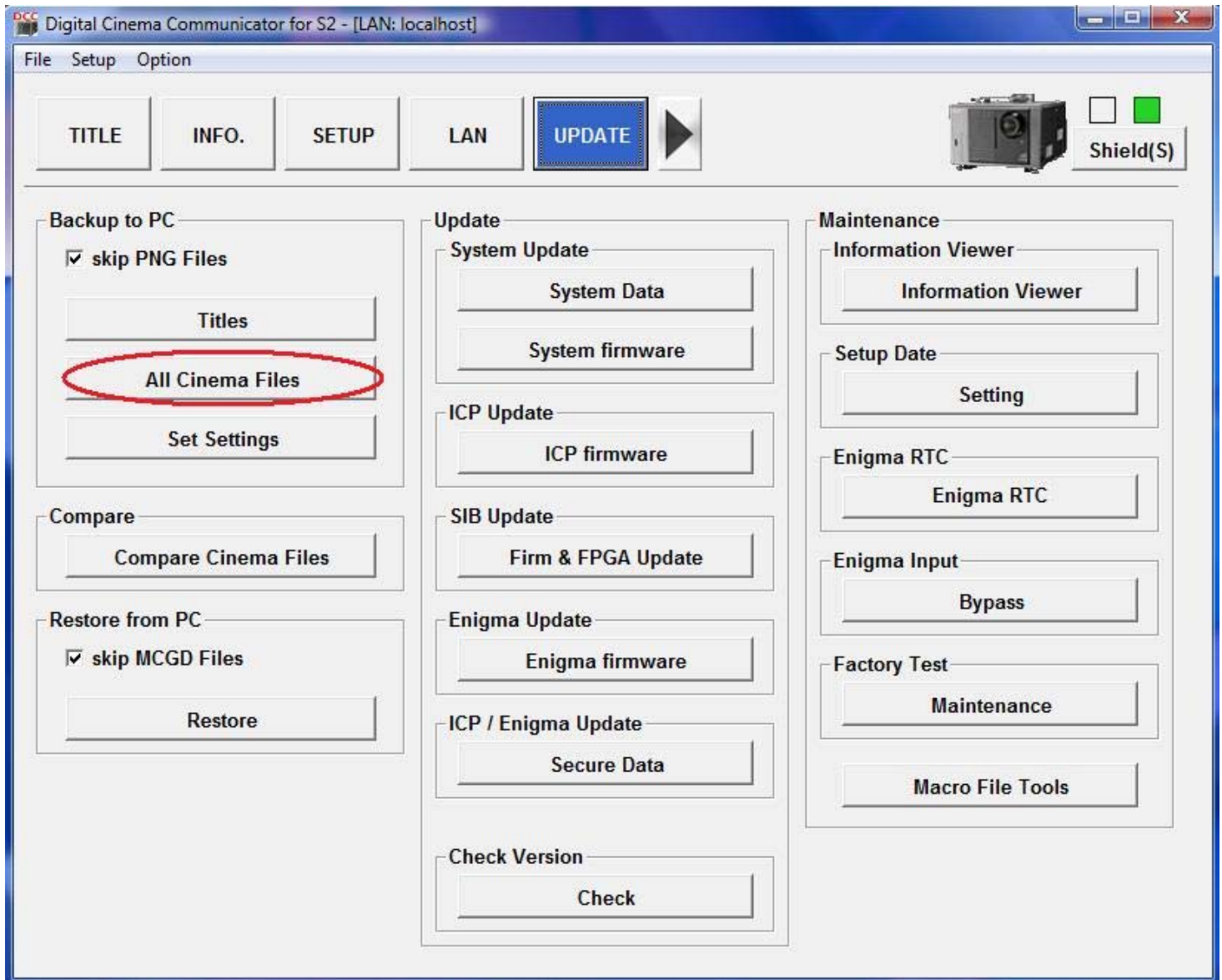
9. When the new folder shows up name the folder after the theatre that is being worked on. Then double click on the folder you just created. (I.E. You are working on theatre number #1 then name your folder "Theatre01". The name is optional and has no bearing on the rest of the actions.)



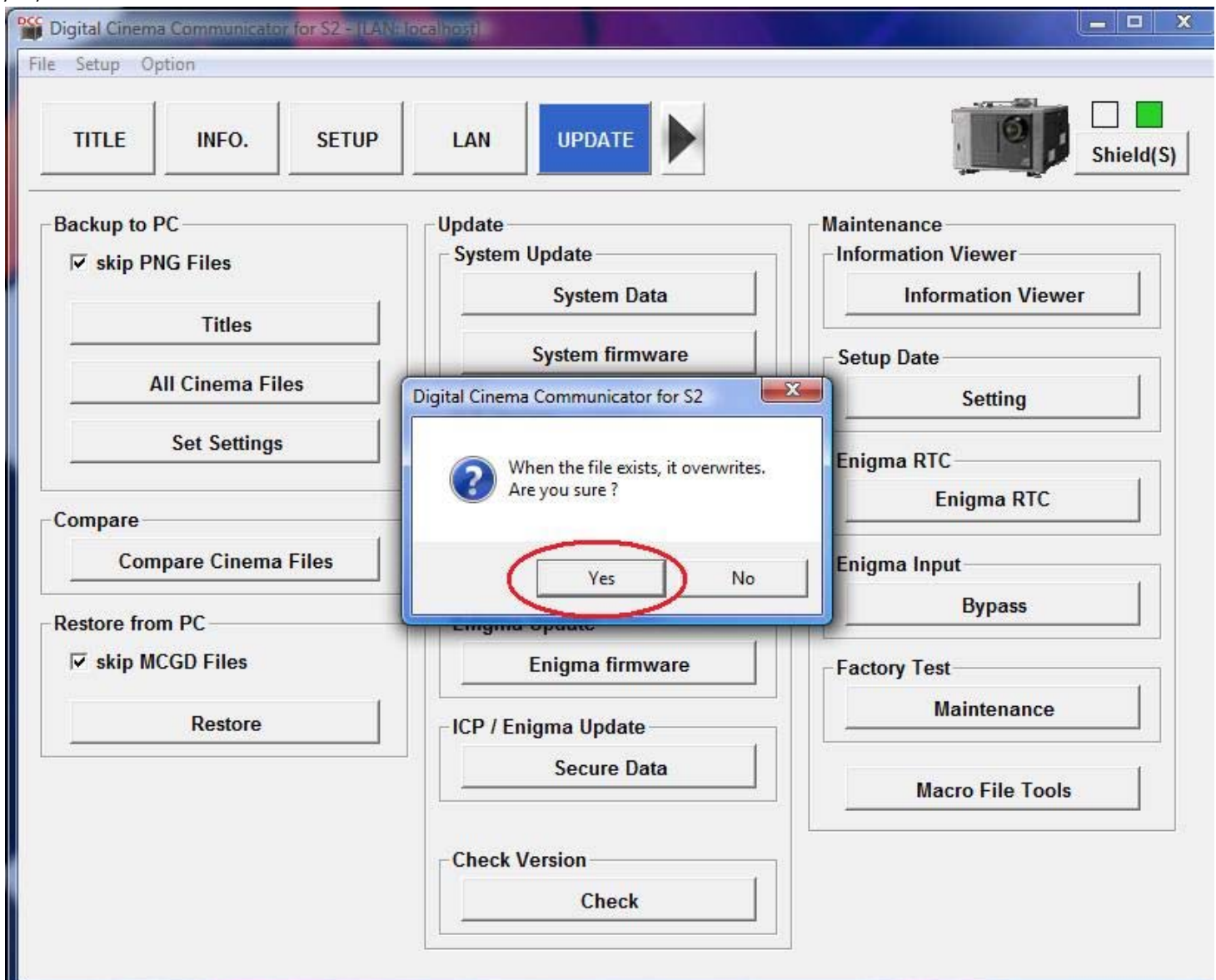
10. Once in your new folder click the SAVE button in the lower right hand corner.



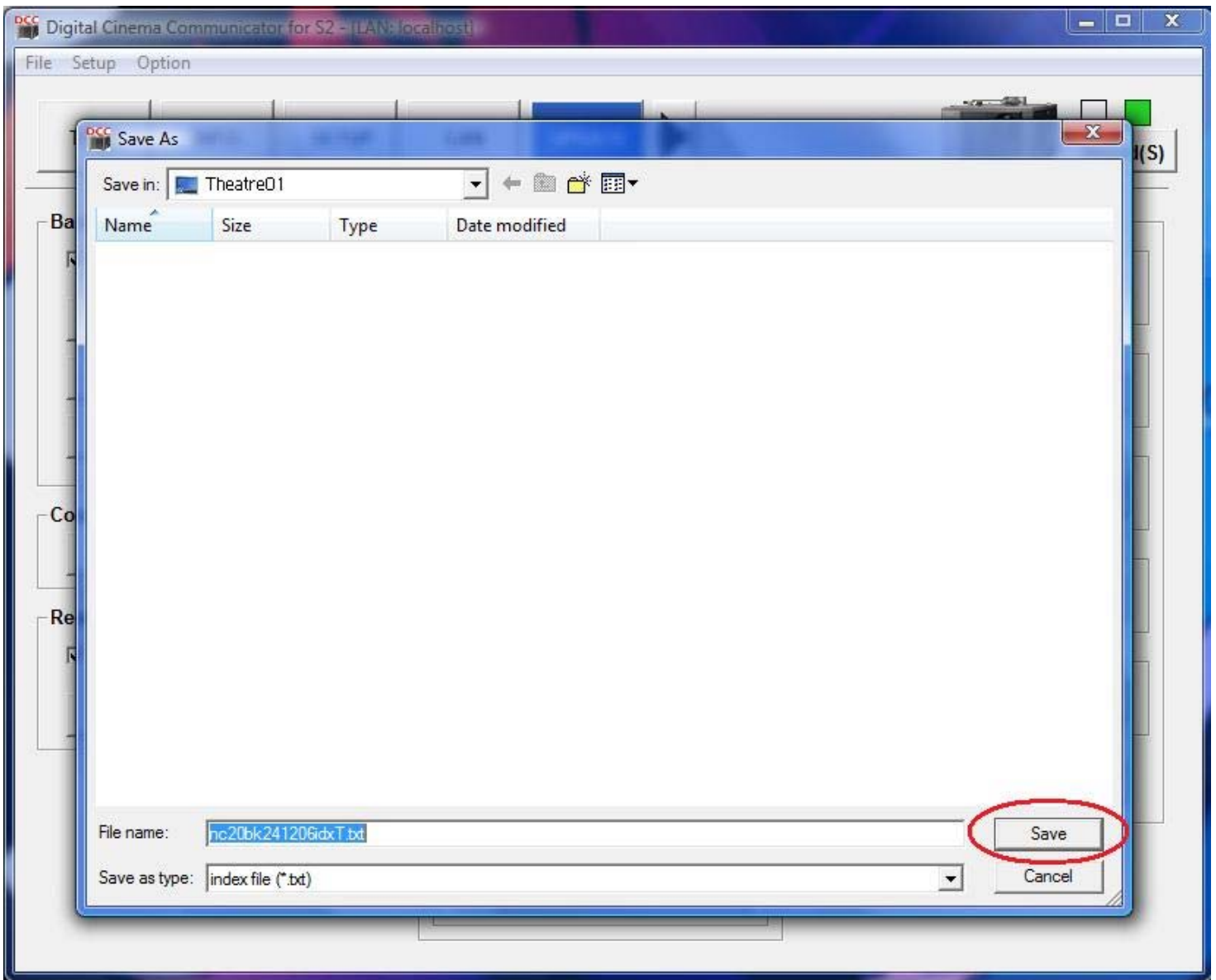
11. Once the TITLES are saved you need to save **ALL CINEMA FILES**.



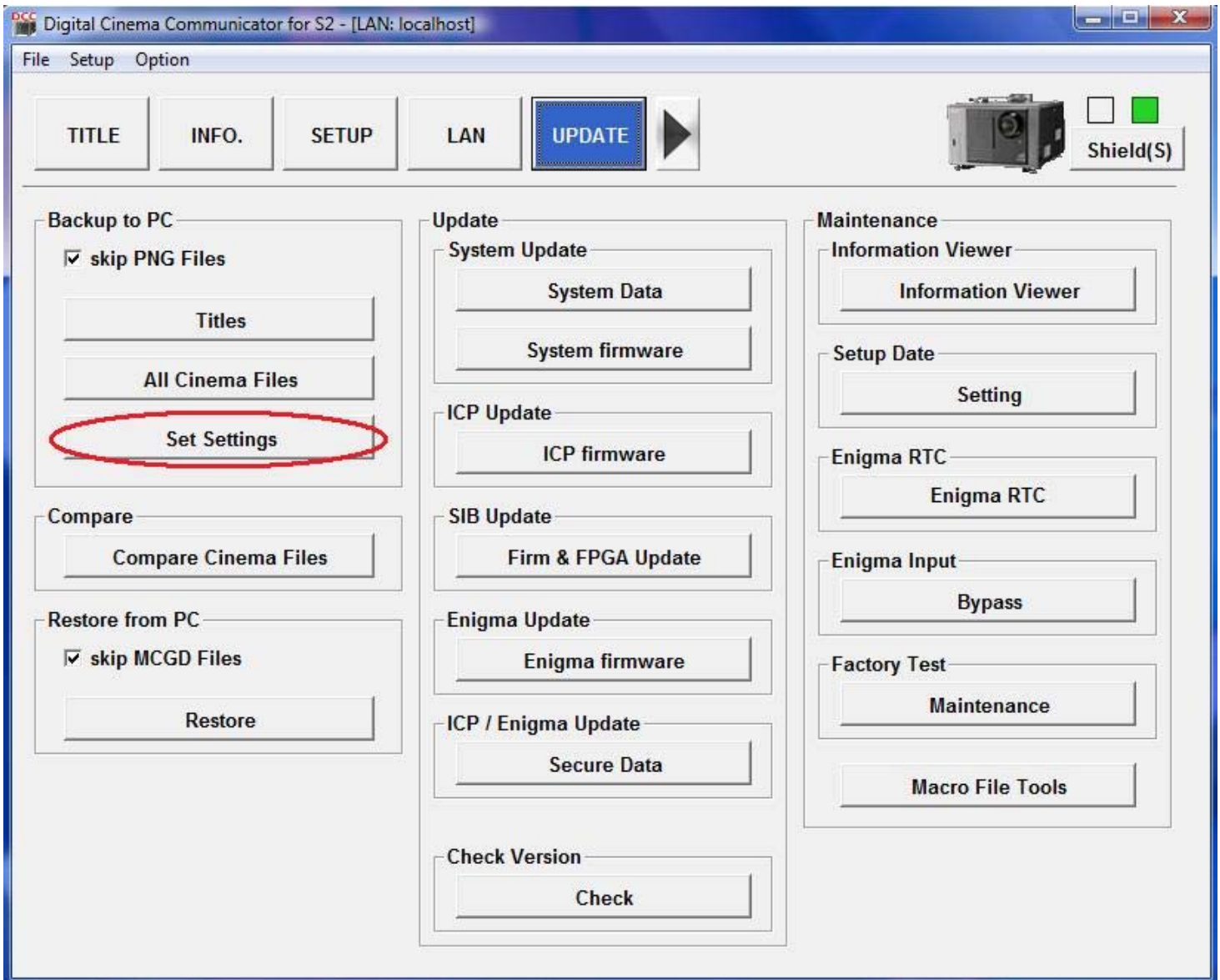
12. When the new window opens click **YES**.



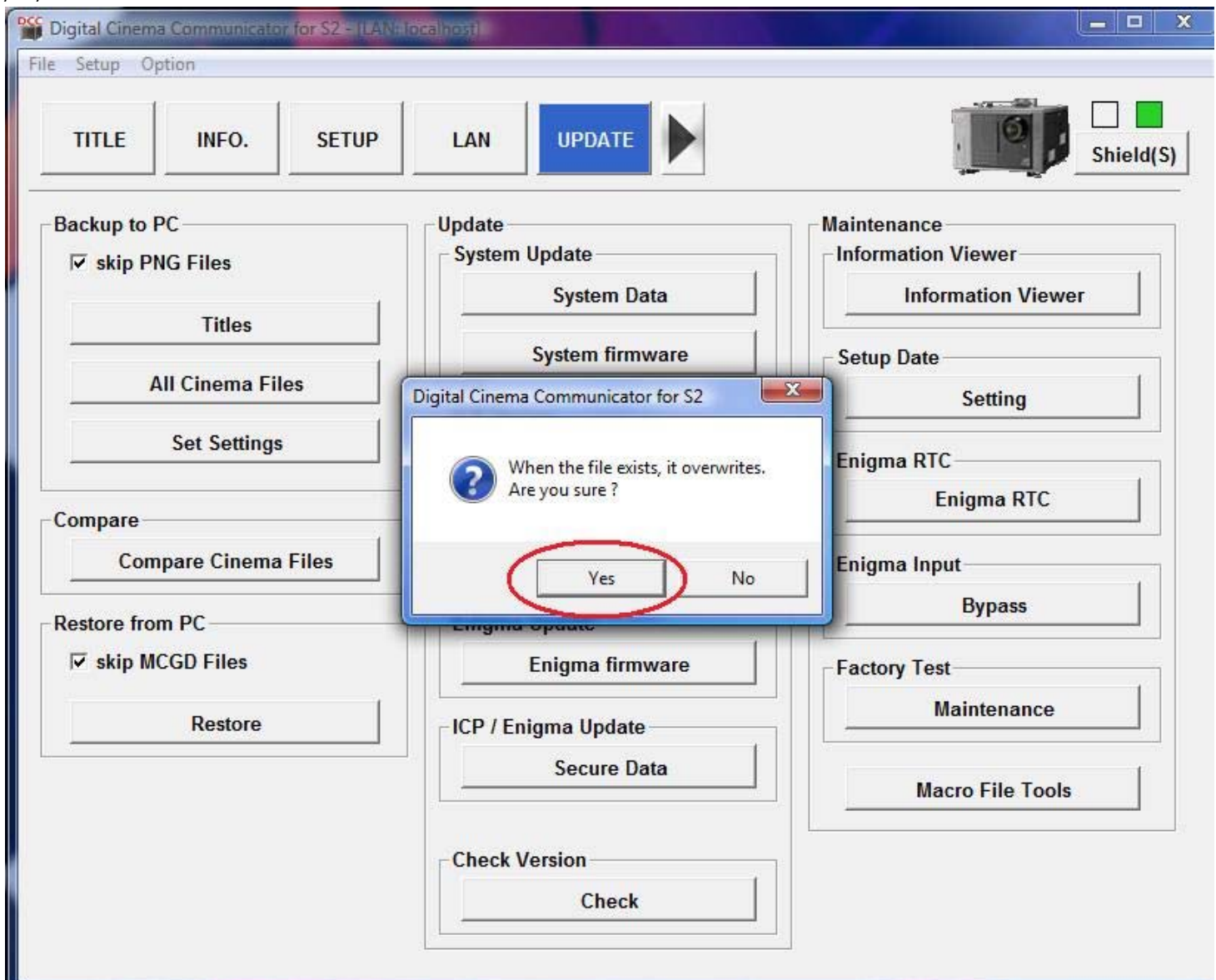
13. Once in your new folder click the SAVE button in the lower right hand corner.



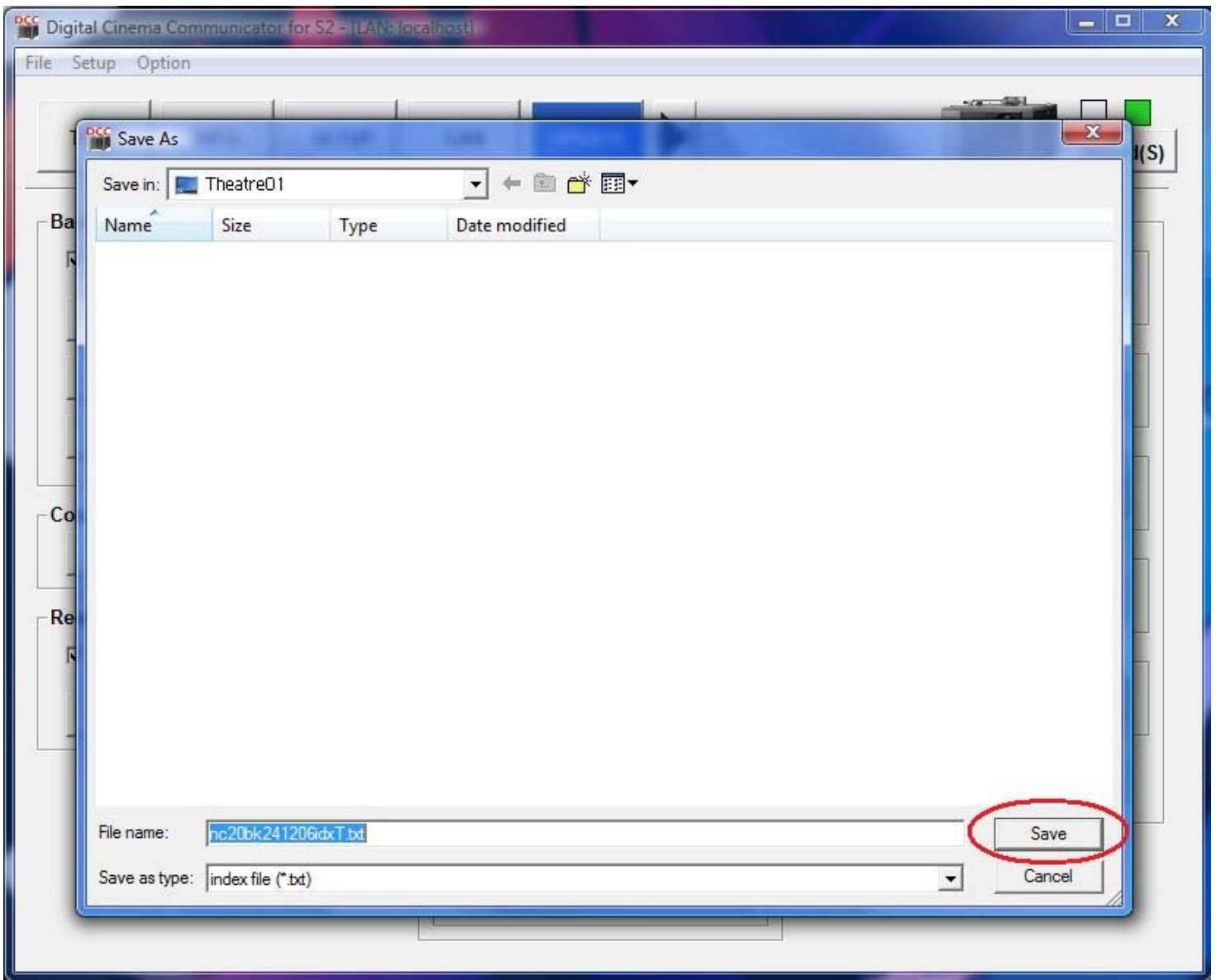
14. Click on **SET SETTINGS**.



15. When the new window opens click **YES**.



16. Once in your new folder click the SAVE button in the lower right hand corner.



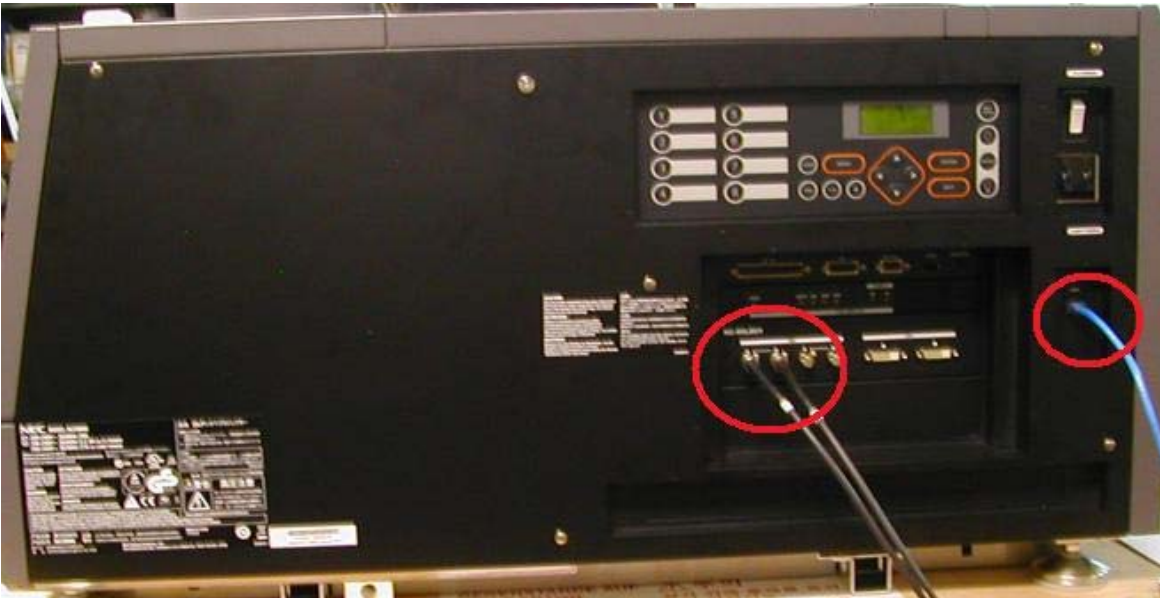
You are now done backing up your ICP boards configuration files.

NEC ICP Board Install.

1. Be sure to shut down the projector properly, by pressing the **power button**, until the display panel reads *Standby*.
2. Turn off the power to the projector by tripping the **breaker** as well as **white power switch**.



3. All cables must be removed from there respective connectors on the side panel.



4. Using a phillips head screw driver, unscrew the phillips screws from the side panel. (NOTE: The screws will not come completely out of the side panel, they will remain lose but still attached.)



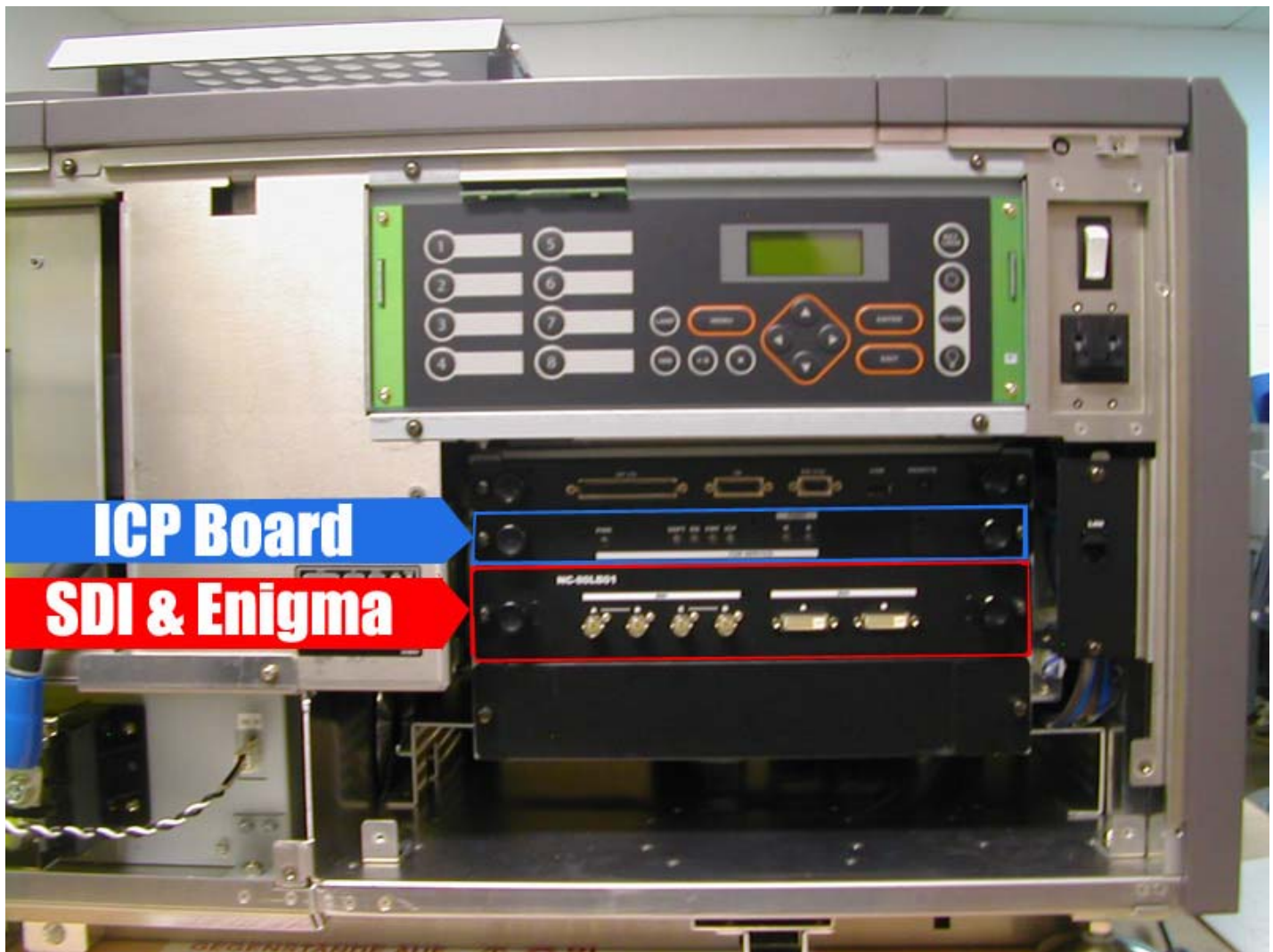
5. Using the **security key** unlock the side panel and pull forward, then lift up to remove.





6. Using your phillips screw driver, loosen the screws starting with the bottom panel. (NOTE: You will have to start at the bottom and move up the boards as they are interlocked, meaning that to take out the tip board you have to remove all boards below it.)





ICP Board

SDI & Enigma

Order boards must be removed in.



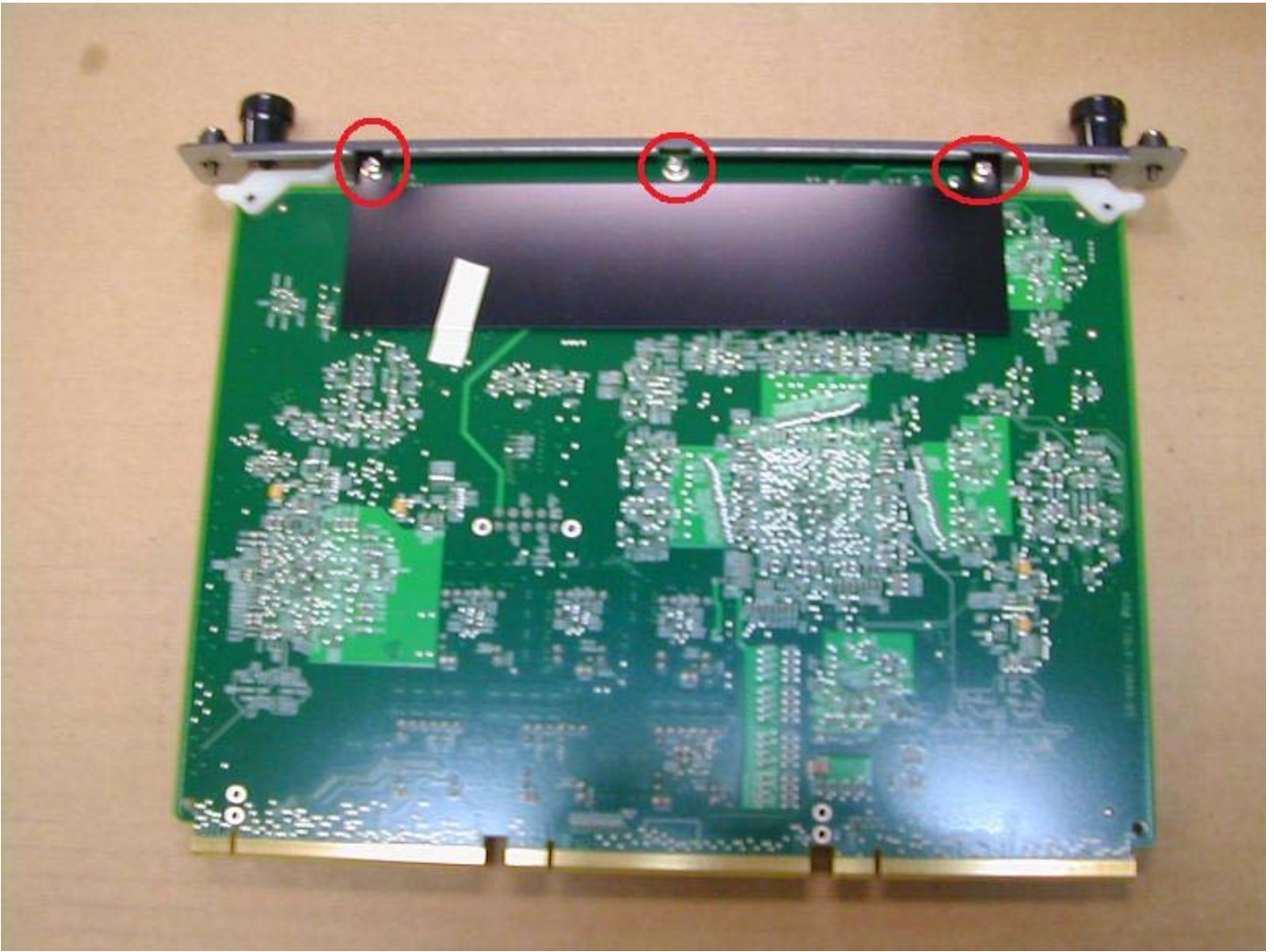
Removal of the SDI Board



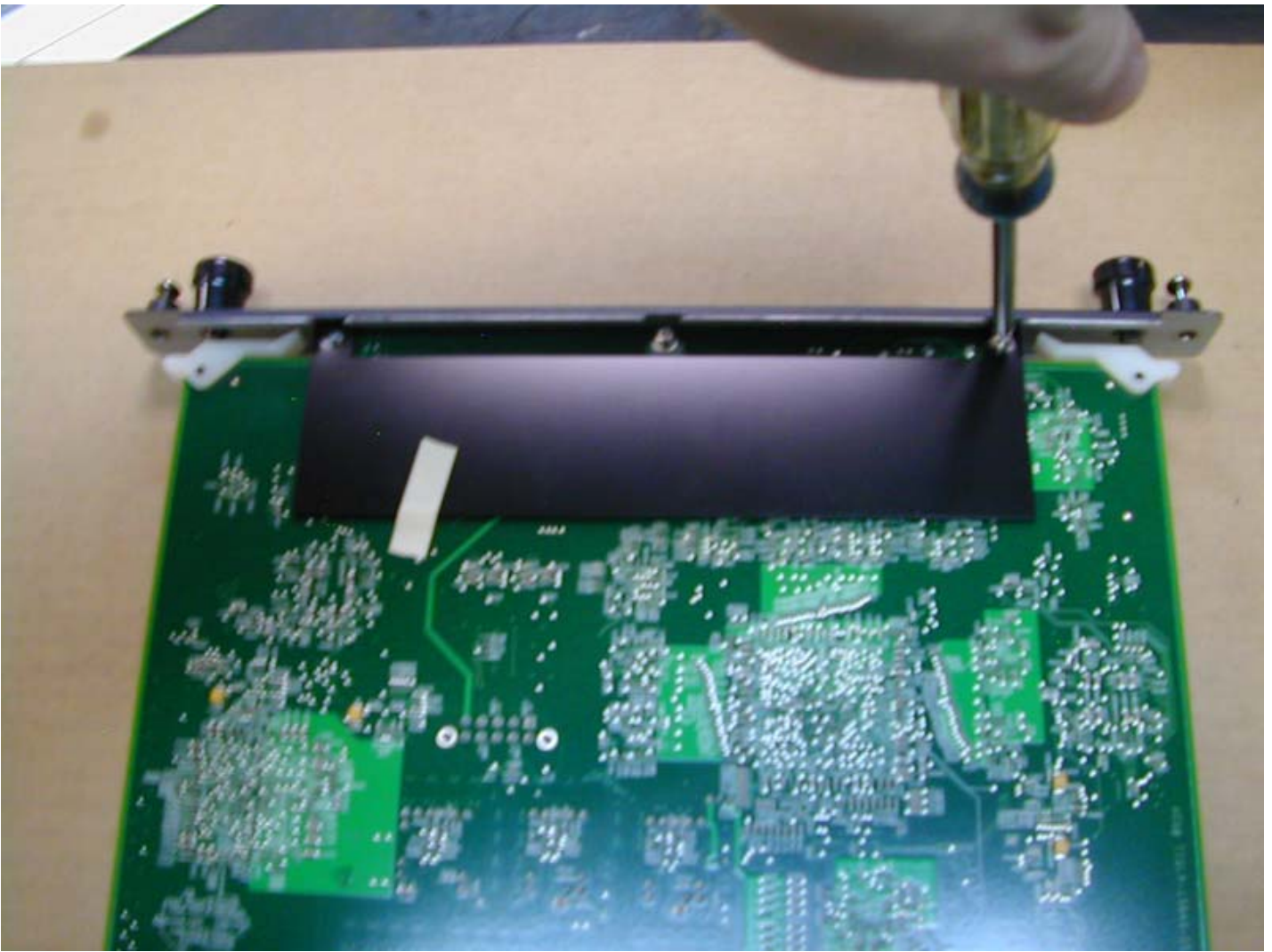
Removal of ICP Board

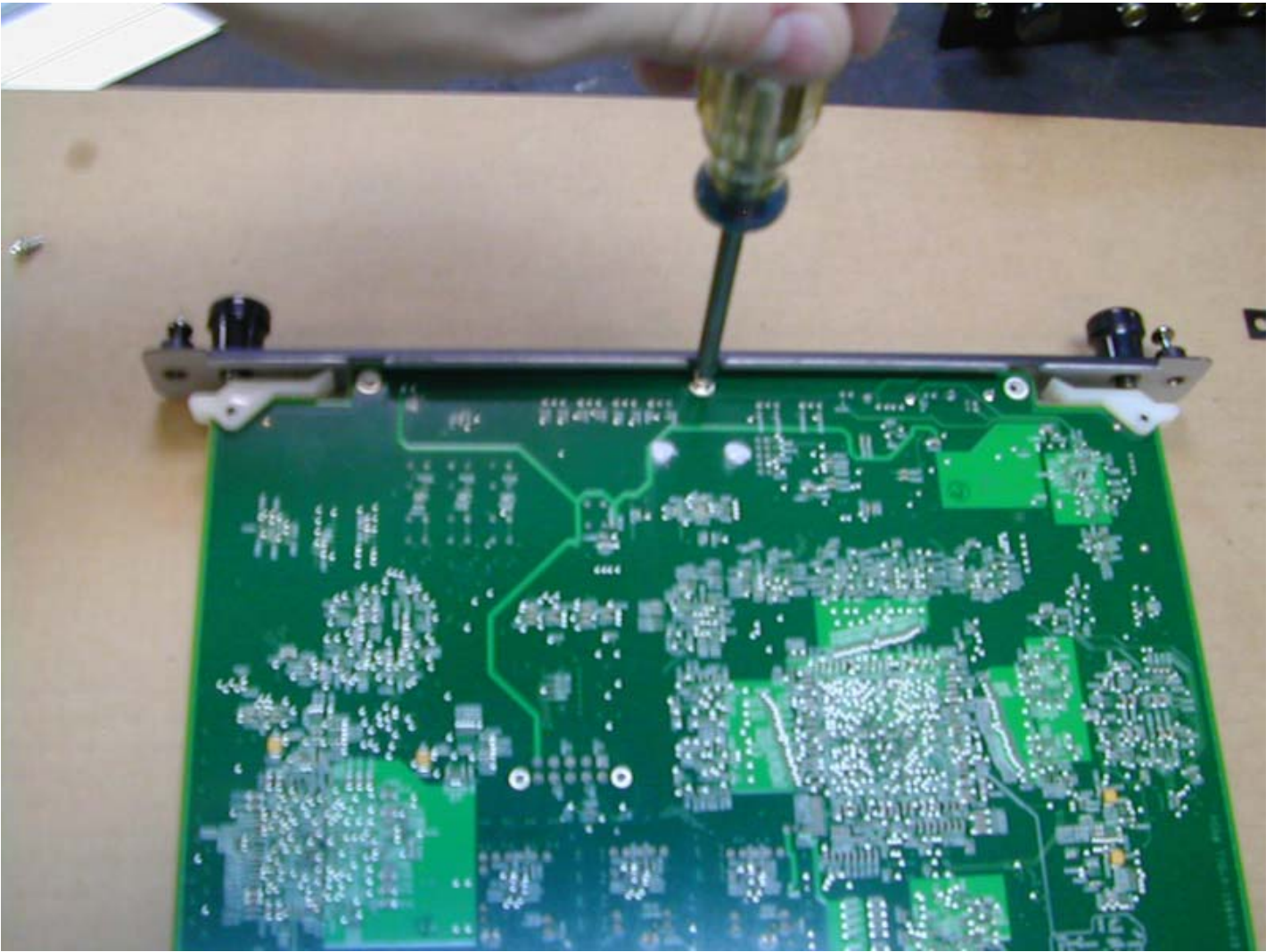


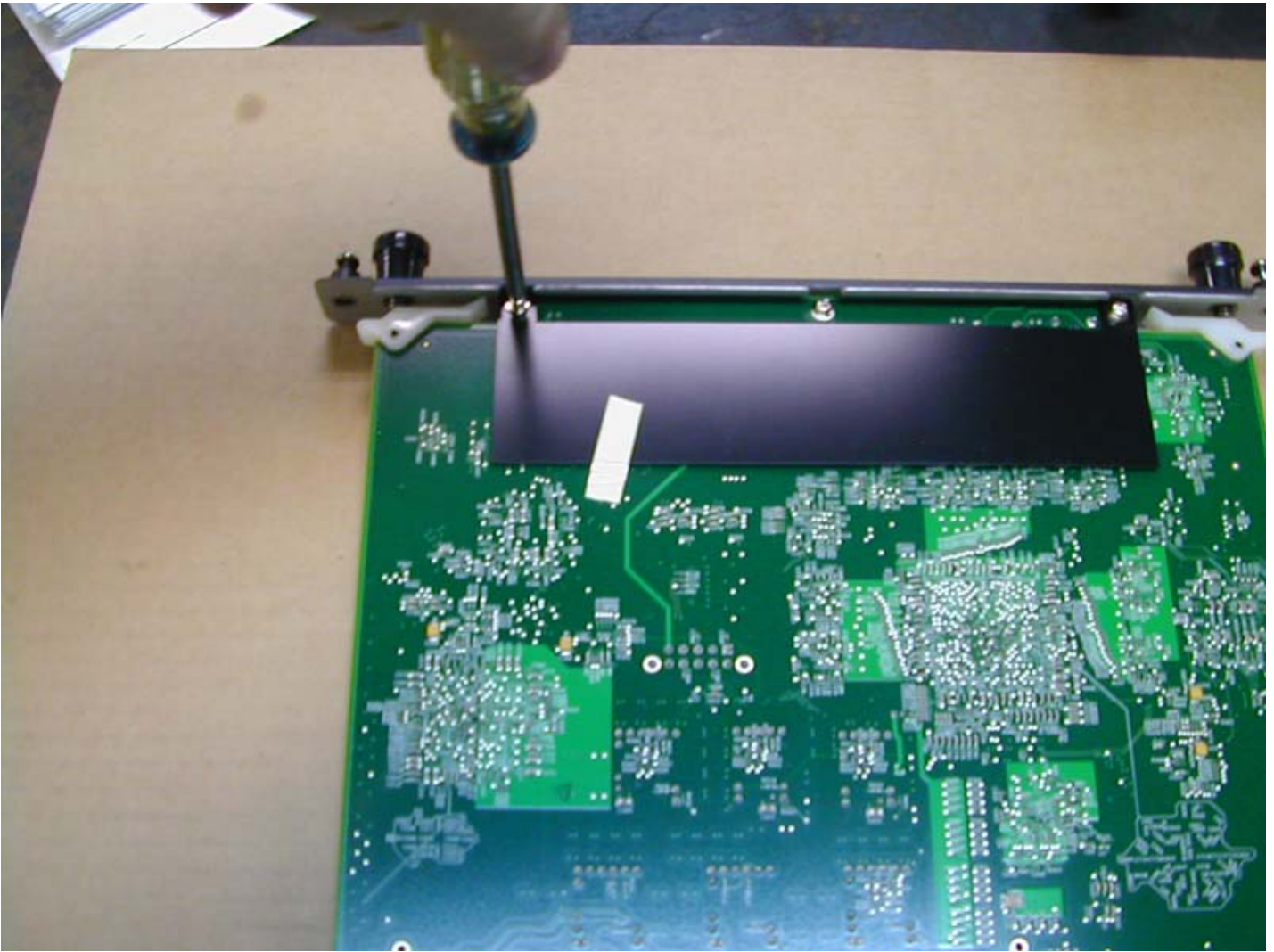
7. Place the old ICP board face down on a clean table. (NOTE: Do not do this on the floor or carpet.)



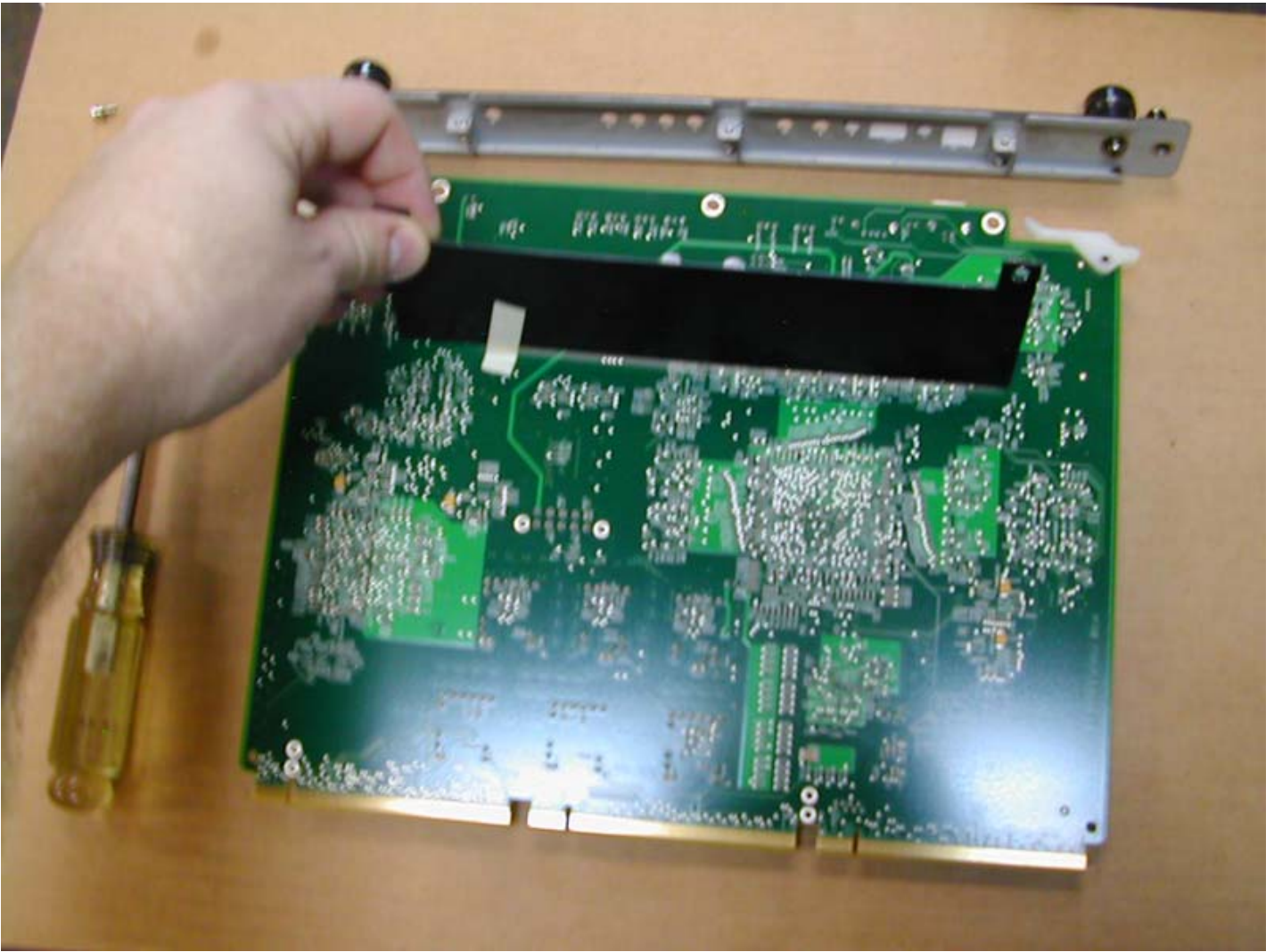
8. Carefully unscrew the 3 phillips screws holding the face plate to the board.



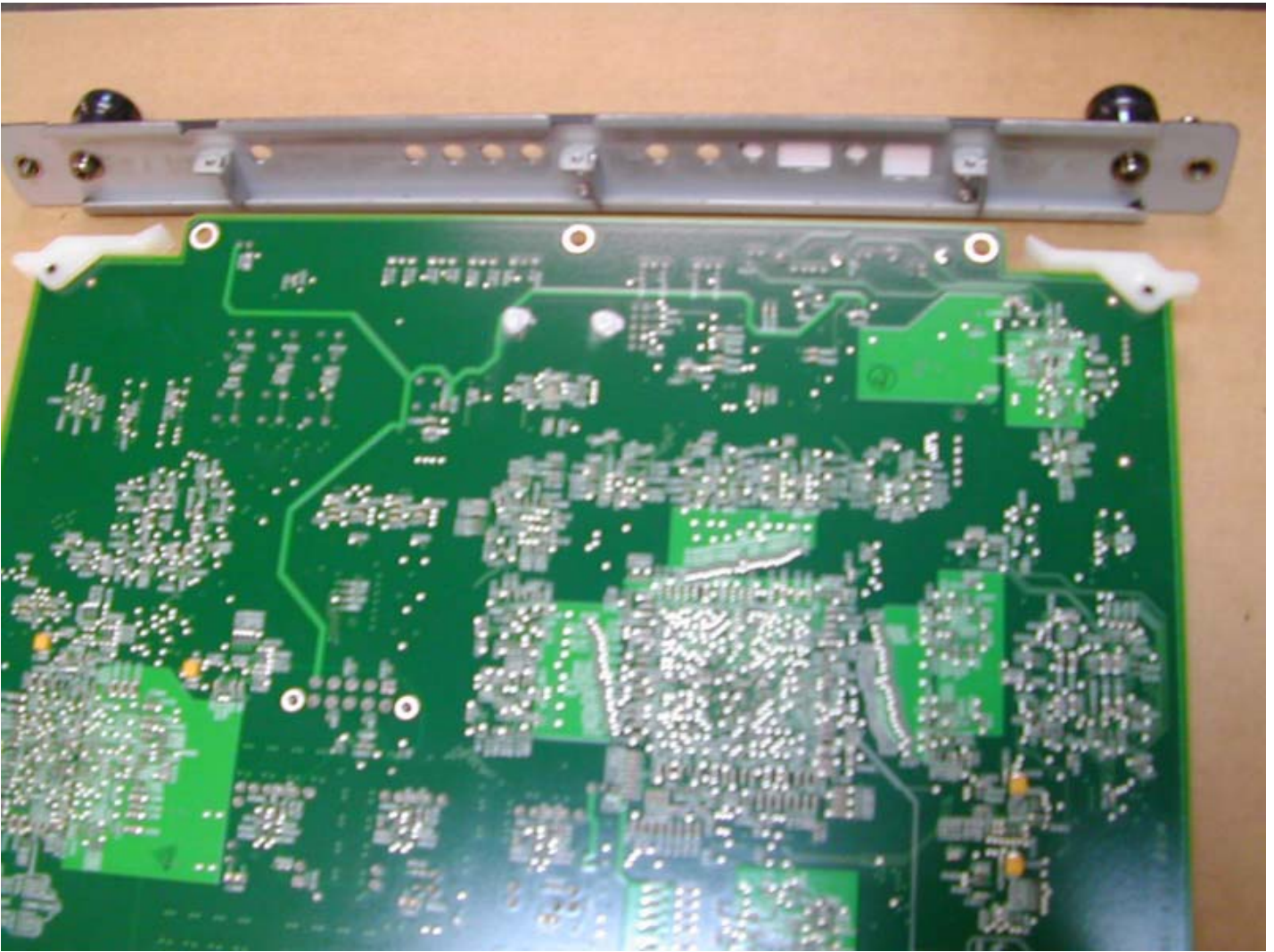




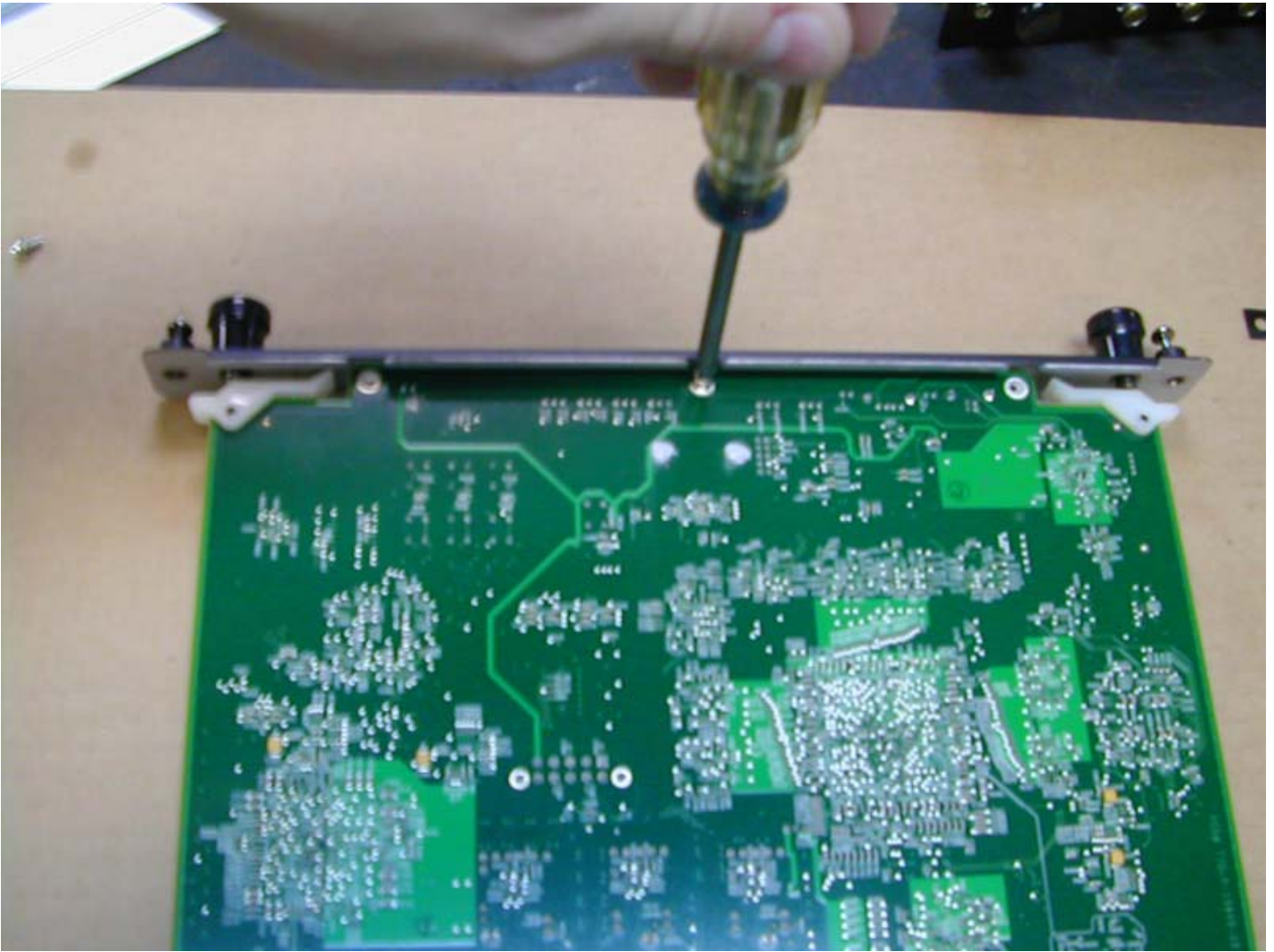
9. Remove protective covering from board.



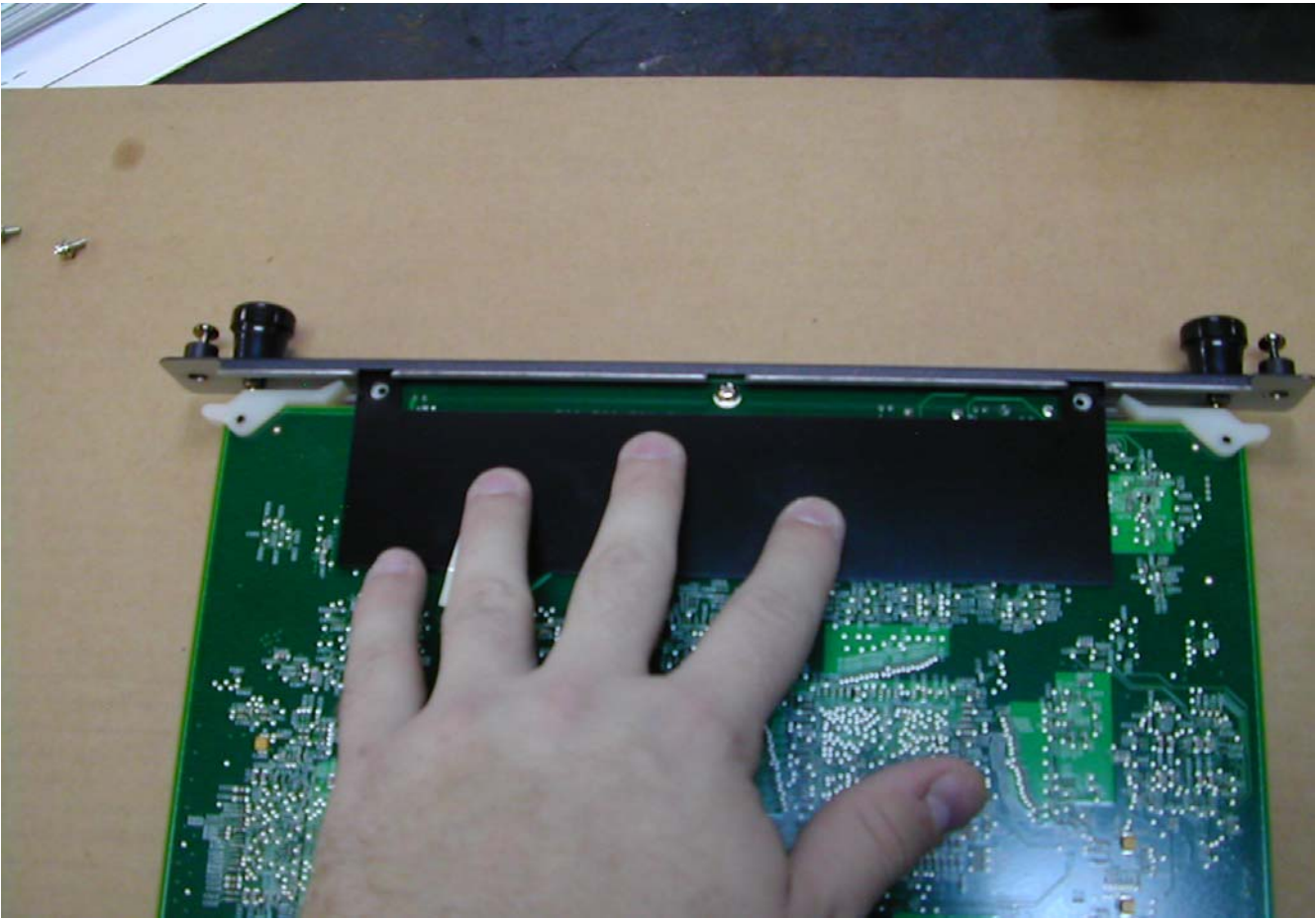
10. Set old board in a safe then, unwrap the new board and place it face down with the screw holes to the face plate.

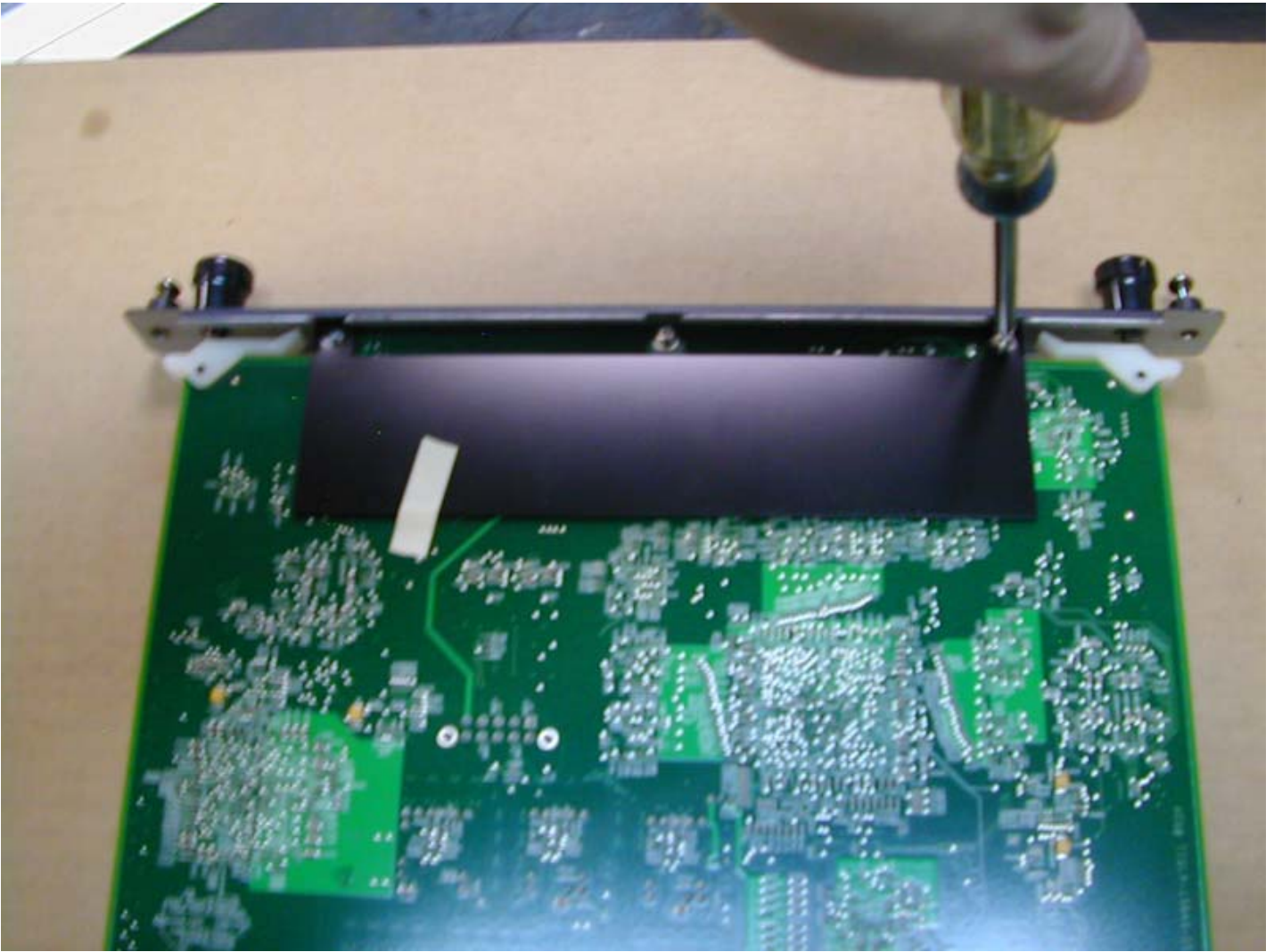


11. Start by screwing in the middle screw first. Make note that the face plate screw harness should be on the underside of the board at the moment.



12. Place the protective covering on the board, making sure to line up the screw holes on both sides.





13. Once the face plate has been secured to the board insert the board back into the proper slot of the projector. After the board is secured follow this process for all boards that were removed.



14. Now tighten all the lock screws on all the boards.



15. Replace the side panel locking it in place with the security key.



16. Tighten all the lock screws into the side panel.



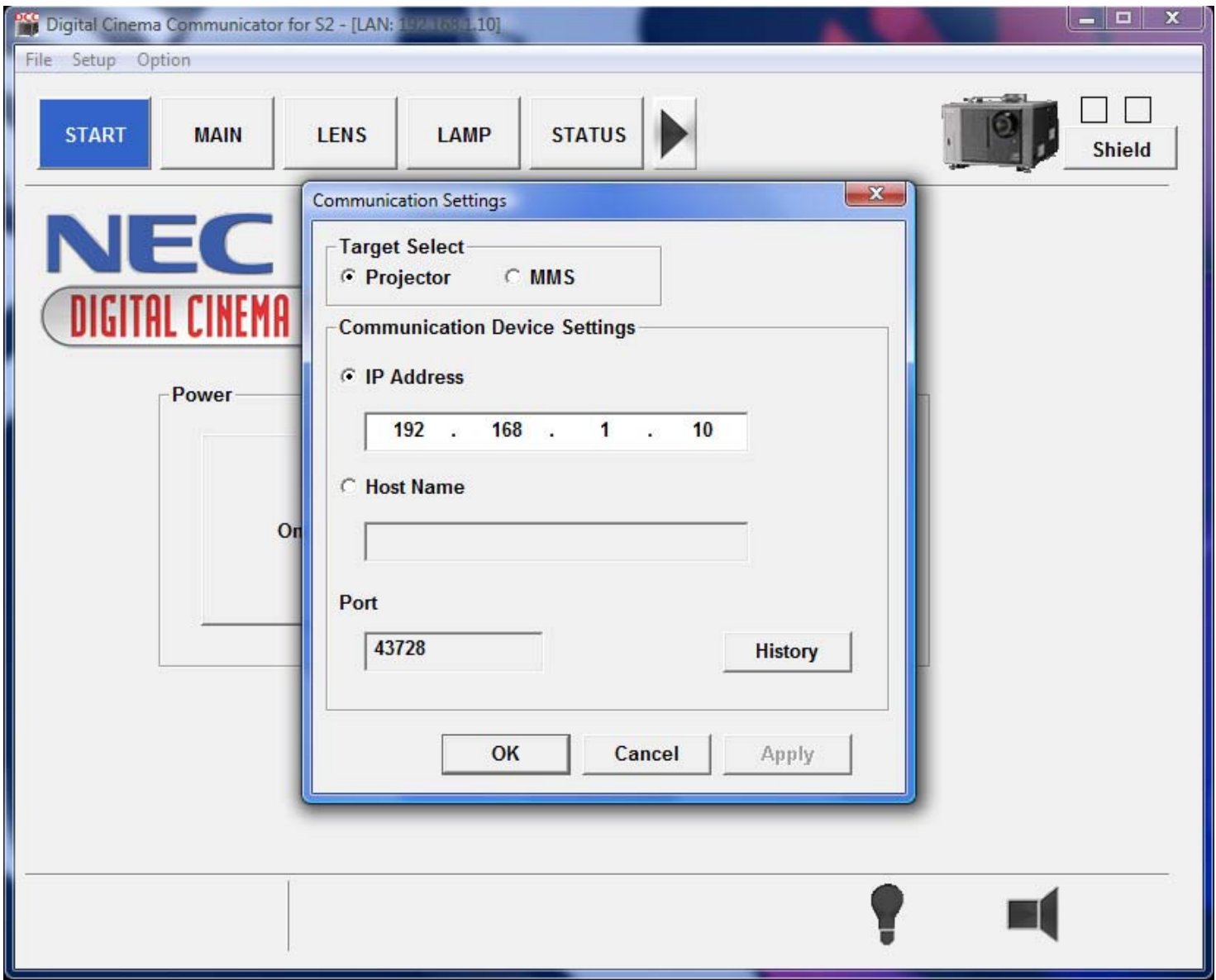
17. Once the side panel is locked, removed remove the security key and power on the projector.

18. Once powered on you will receive a message on the LED panel reading Physical Marriage. To correct this log on to your NEC Communicator.

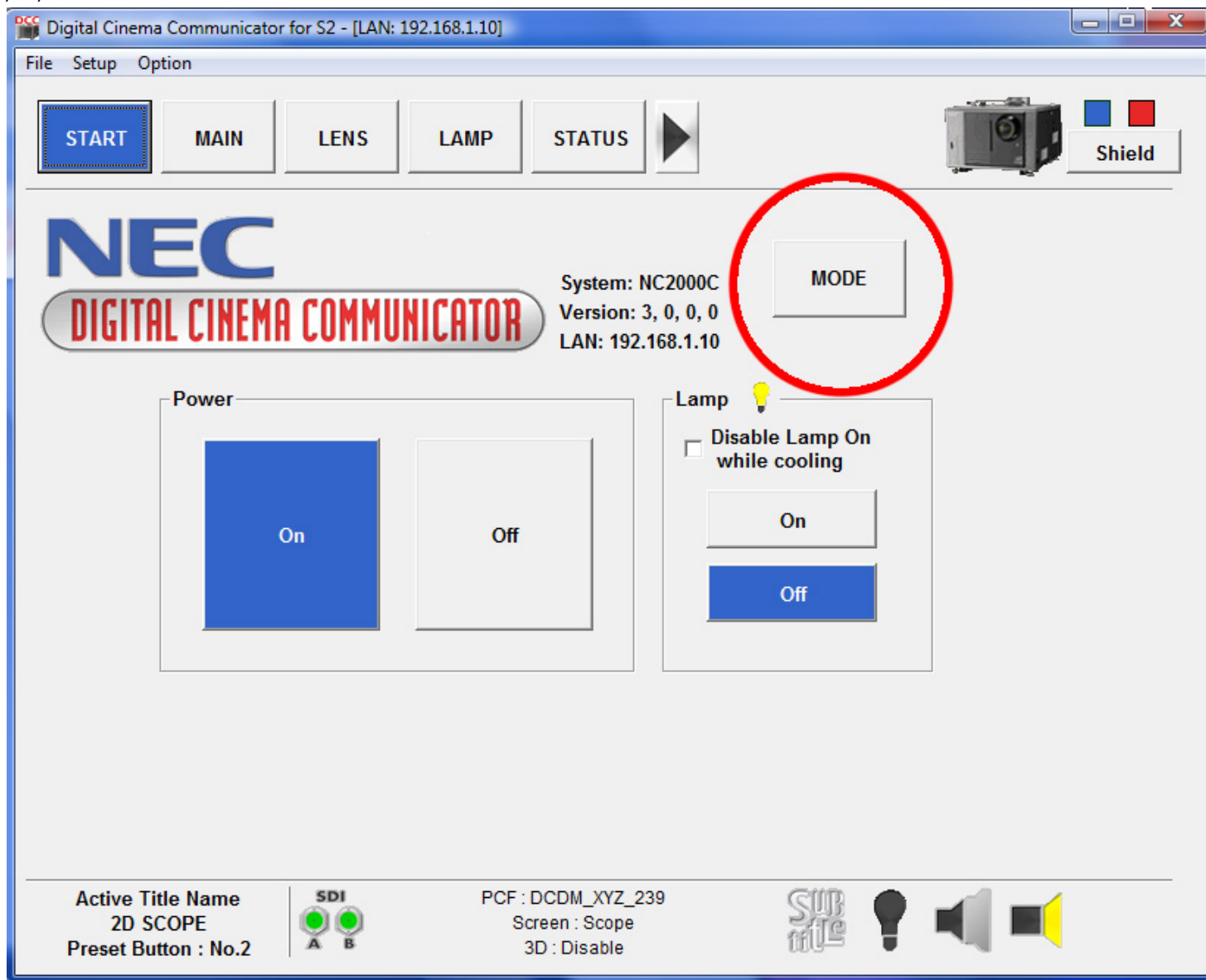


Board Re-Marriage

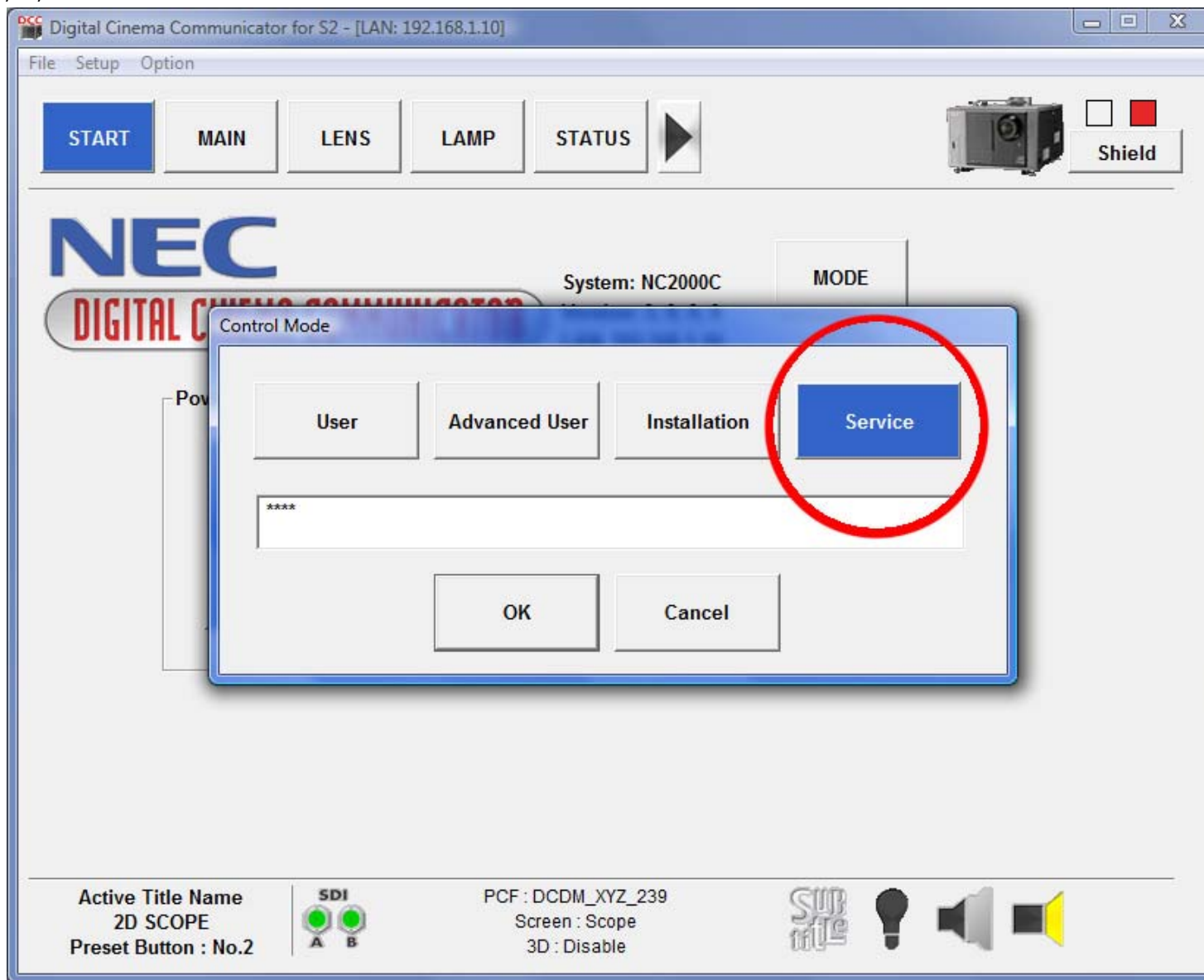
1. Connect to the projector via the Communicator. Once you have entered your projectors IP address click OK. (NOTE: That the IP address of your projector may differ from the one used below.)



2. Once logged on select **Mode**.



3. Click on the **SERVICE** button, and blow enter the code **3151** and click **OK**



4. Click the **SETUP** button. Then click the **INSTALLATION** button. Then click on the **Re-Marriage** button

DCC Digital Cinema Communicator for S2 - [LAN: 192.168.1.10]

File Setup Option

TITLE INFO. **SETUP** LAN UPDATE ▶

Shield(S)

Setup **Installation** Color Setting MMS Setting Option Slot

Image Orient

Normal - F Normal - R

Baudrate

4800 9600 19200 **38400**

Passcode

Installation Advanced User

Date / Time

UTC Time 2011/03/23 19:17:03

Projector Time 2011/03/23 13:17:03

Adj. +1 Hour -1 Hour

PC Local Apply

New Router Setup

Execute

Lens Center

Execute

Language (DCC)

Language Select

Lens Calibrate

Execute

IMB Maintenance

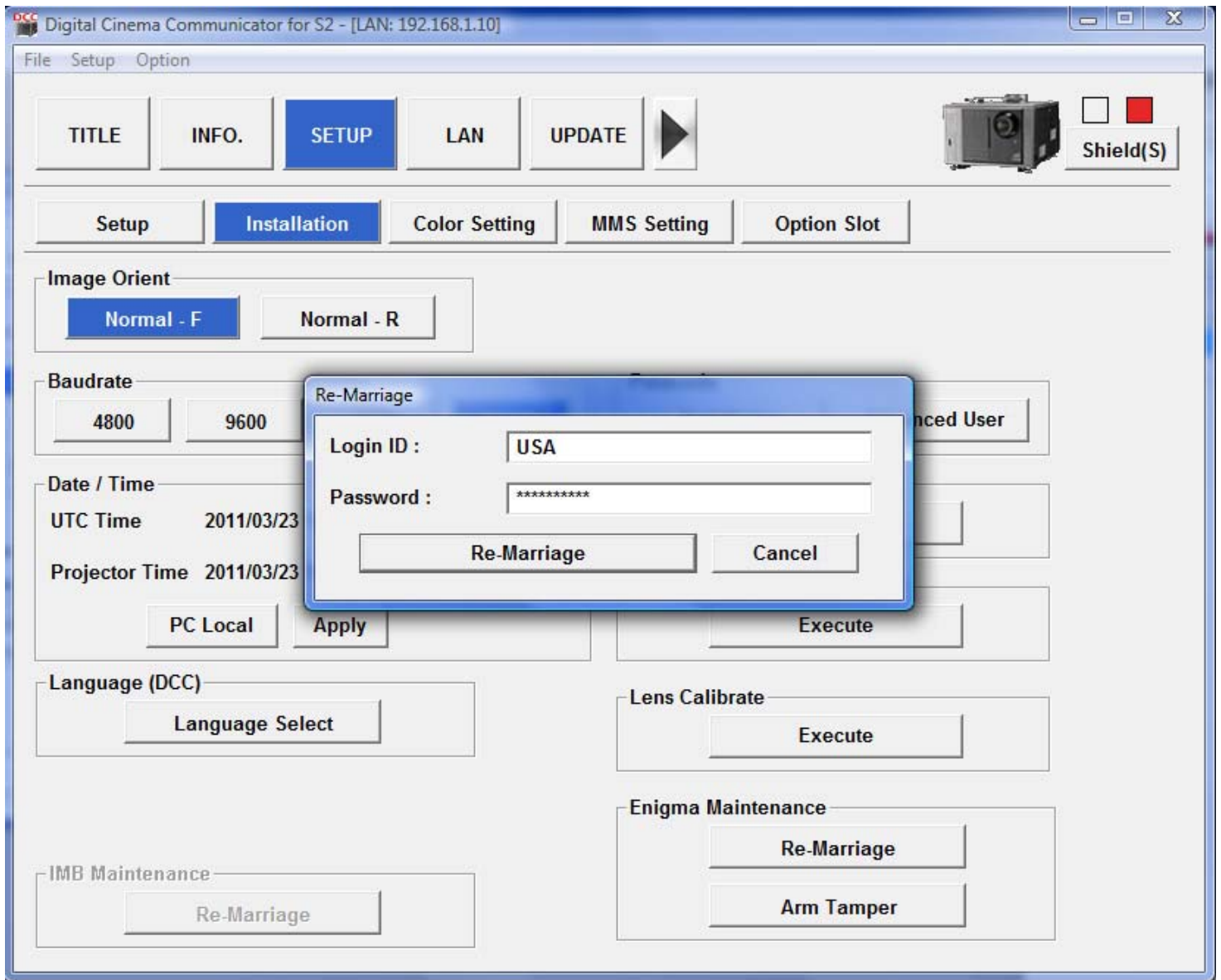
Re-Marriage

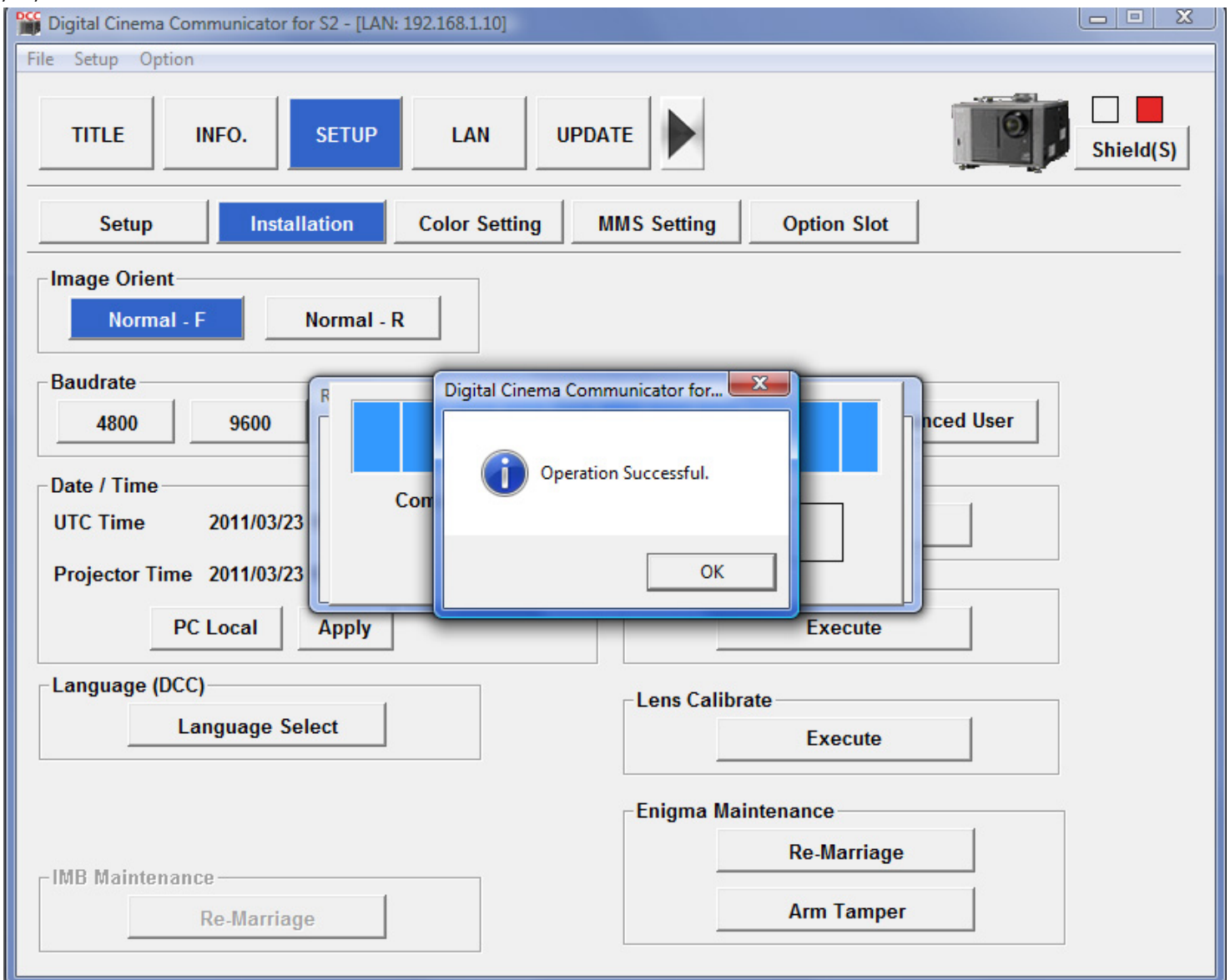
Enigma Maintenance

Re-Marriage

Arm Tamper

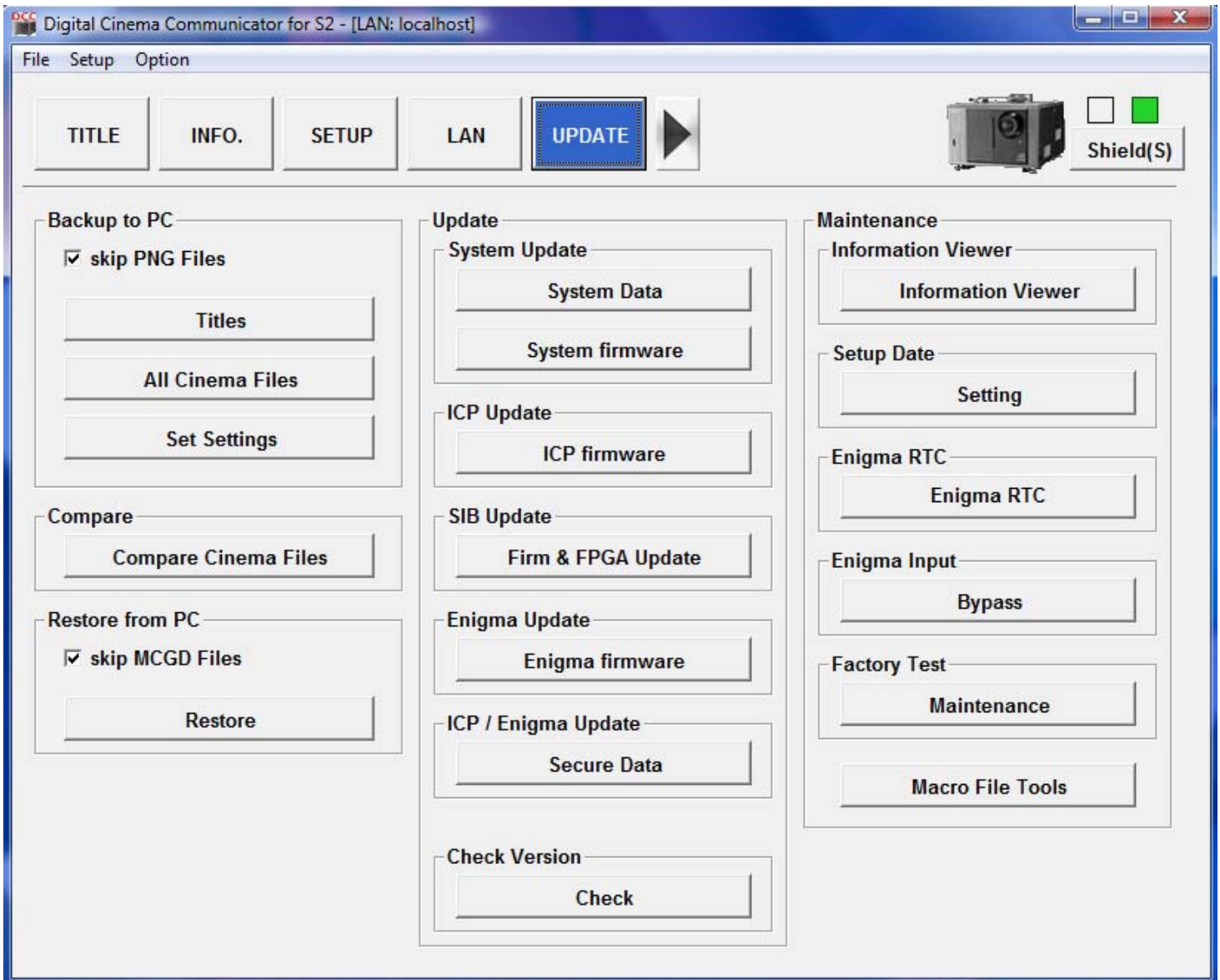
5. In new window enter **USA** as the Login ID. Enter the word **Nakasendou** . (NOTE: Both words must be entered just as they are. They are case sensitive.)



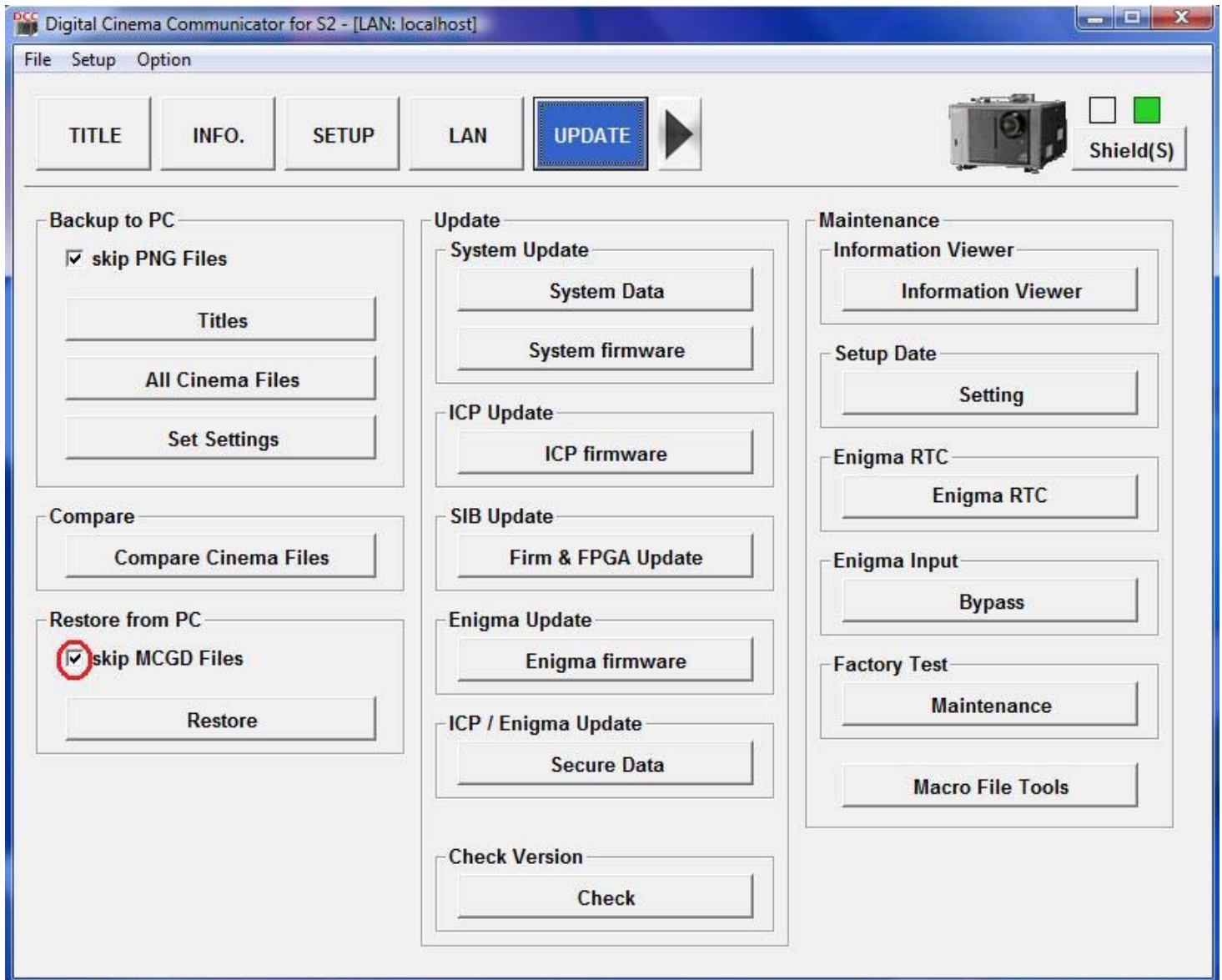


You are now done with the Re-Marriage.

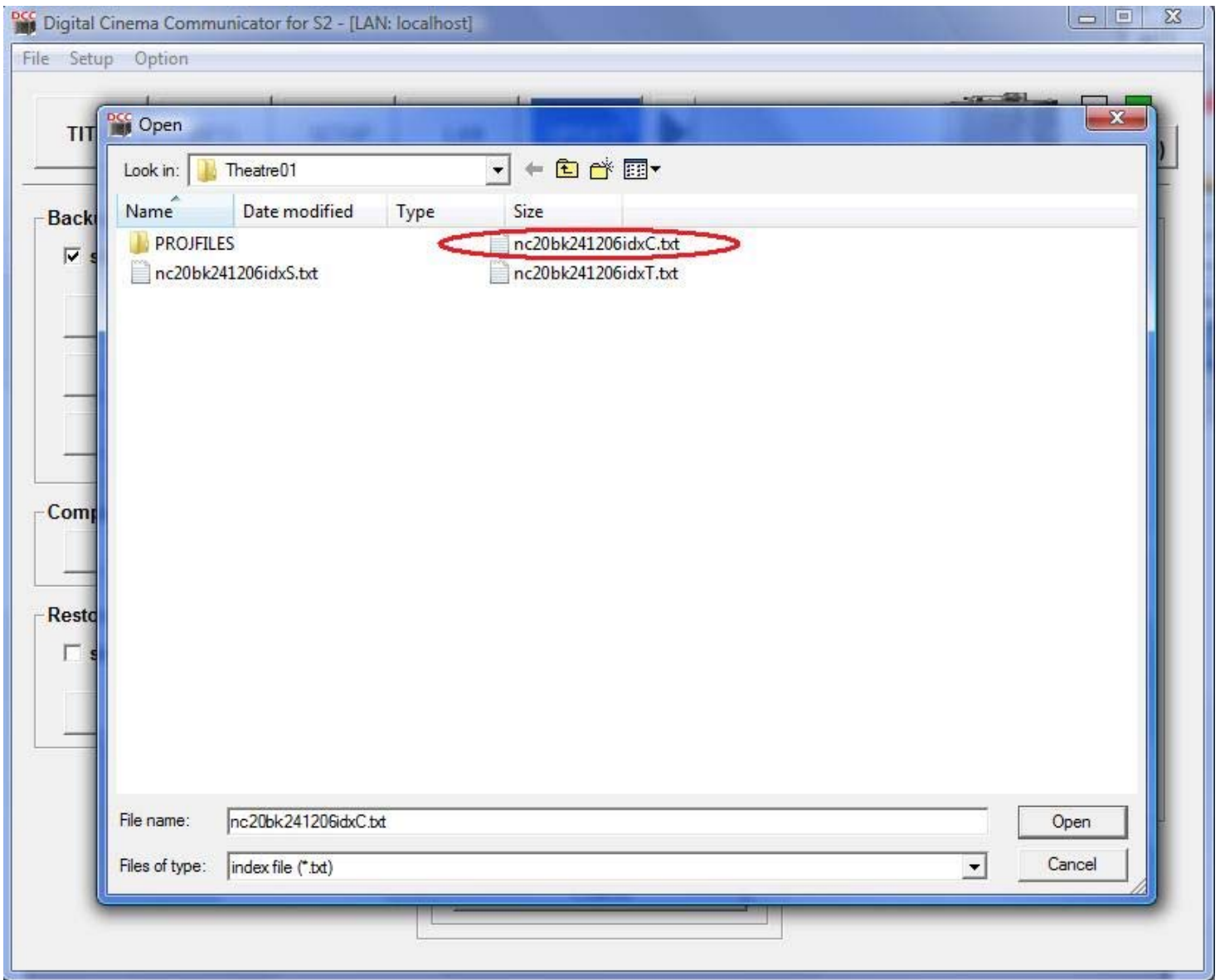
6. Next you will need to put your configuration files back on your projector. Click the **UPDATE** button.



7. Uncheck the box next to **SKIP MCGD FILES**.



8. Select the file with the ' C ' at the end of the name. Then click **OPEN**.



9. Select the file with the 'T' at the end of the name. Then click **OPEN**.



10. Select the file with the 'S' at the end of the name. Then click **OPEN**.



You have now completed the setup of your new ICP Board. Restart the projector and have a good day.